

Copyright

This manual is copyrighted by Canon Computer Systems, Inc. (CCSI) with all rights reserved. Under the copyright laws, this manual may not be reproduced in any form, in whole or part, without the prior written consent of CCSI.

© 1996 Canon Computer Systems, Inc.

Disclaimer

Canon Computer Systems, Inc. has reviewed this manual thoroughly in order that it will be an easy to use guide to your Canon BJC-4550 Color Bubble Jet Printer. All statements, technical information, and recommendations in this manual and in any guides or related documents are believed reliable, but the accuracy and completeness thereof are not guaranteed or warranted, and they are not intended to be, nor should they be understood to be, representations or warranties concerning the products described.

Your printer and the software media included with your printer have been sold to you subject to the limited warranties set forth in the warranty card and license agreement enclosed with the respective product. All software is licensed AS IS, as described in the license agreement enclosed with the software diskette. Further, CCSI reserves the right to make changes in the specifications of the products described in this manual at any time without notice and without obligation to notify any person of such changes.



If you have any questions regarding your printer or the information in this manual, please call the Canon Computer Systems Customer Care Center at **1-800-423-2366** (U.S.A.) or contact Canon Canada at **1-800-263-1121**.

Trademarks

Canon, BJ and BJC are registered trademarks and Bubble Jet and the Bubble Jet logo are trademarks of Canon Inc.

Visual Guide is a registered trademark of Canon Inc. and Canon Information Systems.

Other brand and product names may be trademarks or registered trademarks of their respective companies.



As an Energy Star Partner, Canon Inc. has determined that this product meets the Energy Star guidelines for energy efficiency.

Using Your Documentation

The following documentation is supplied with the BJC-4550 to help you efficiently use your new printer.

Quick Start Guide

This fold-out card describes the steps you follow to unpack and set up your printer, including how to install either the BJ® Printer Driver for Windows® or the Macintosh® Printer Driver. You can follow the steps illustrated on this card to start printing in minutes. It also includes quick reference information to help you use the printer on a daily basis.

User's Manual

This manual offers detailed information on how to operate your printer. It includes printing operations, daily maintenance, and specifications. Read this manual to master basic operations and when you need to know the specifications of the printer.

Canon Creative User's Manual

This manual describes how you install Canon Creative and use all the fun software that it provides. Canon Creative software instantly opens up a world of imaginative possibilities for using your computer and your BJC-4550 to bring out the artist in you. At home or at work, Canon Creative helps you print an amazing variety of colorful personal and professional creations.

Visual Guide® (on the Canon Creative CD)

The Visual Guide makes learning about the printer easy and fast on your computer screen. Once you install the Visual Guide from the Canon Creative CD, you'll find it helpful for finding quick answers to any questions you may have about basic operational functions. See the Visual Guide for complete details on color printing, using the Color Advisor™, and troubleshooting the printer.

Super Solver (on the Canon Creative CD)

The Super Solver is Canon's on-screen troubleshooting guide. It includes questions and answers to any problems you may have. Once you install the Super Solver from the Canon Creative CD, you can use it any time you have a question or a problem.



Note

Canon Creative is not included with refurbished BJC-4550 printers. References to Canon Creative, Visual Guide, Super Solver and Color Advisor do not apply to refurbished BJC-4550 printers. To order Canon Creative, see your Registration Card.

Conventions

This *User's Manual* uses the following conventions to alert you to information that will help you operate the printer correctly and safely.



Note

Notes provide advice or suggestions regarding the use of the printer.



Caution

Cautions alert you to operations that could cause damage to your hardware or software, or cause injury to yourself.

Distinctive typefaces identify the printer buttons you press, the lights on the operator panel, and any commands you enter at your computer.

- The buttons you press appear in this typeface: **POWER**.
- The names of lights you see appear in this typeface: **ERROR**.
- When you type something on your computer, it appears in this typeface: **DIR/P**.

Contents



- 1 Introduction 1-1
 - Supplies and Accessories 1-2
 - BJ Cartridges and Ink Tanks 1-2
 - Canon Specialty Papers 1-3
 - Getting Help From Canon 1-4
 - Servicing the Printer 1-6

- 2 Using the Printer With Windows 2-1
 - Installing a Printer Driver 2-1
 - Printing a Document 2-2
 - Printer Setup Within Windows 95 2-3
 - Opening the Printer Properties Dialog Box in Windows 95 2-3
 - Using the Printer Driver in Windows 95 2-3
 - Printer Setup Within Windows 3.1 2-4
 - Accessing the Printing Options 2-4
 - The Windows Tabs 2-5
 - Specifying Your Printing Options 2-8
 - Recommended Graphics Settings 2-9
 - Using the Setup Analyzer 2-10
 - Using Color Advisor 2-11
 - Using Cartridge Detection 2-11
 - Printing Speed Versus Color 2-12
 - For Quick Color Printing 2-12
 - For High Quality Color Printing 2-12
 - For Monochrome Printing 2-13
 - Other Ways to Improve Print Speed in Windows 2-13

- 3 Using the Printer With Your Macintosh 3-1
 - Printing a Document With QuickDraw 3-2
 - Color Dialog Box 3-4
 - Printing a Document With QuickDraw GX 3-5
 - Using the Utilities Dialog Box 3-7
 - Printing With Photoshop 3-8
 - Installing the BJC-4550 Plug-In 3-8
 - BJC-4550 Plug-In Dialog Box 3-9
 - Using the BJ Standard Monitor Profile 3-13

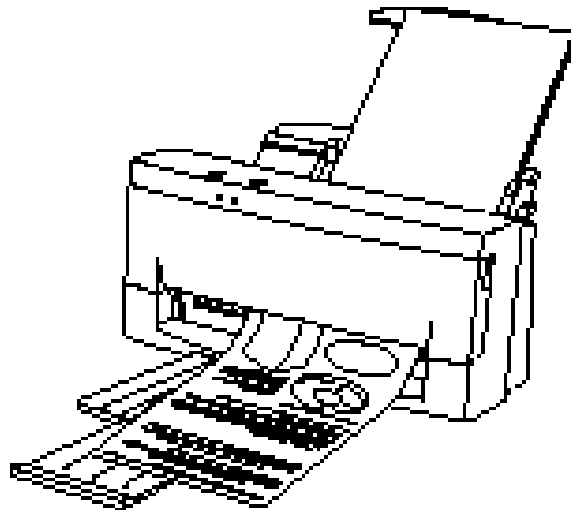
4	Paper Handling	4-1
	Selecting Paper Types	4-2
	Paper Guidelines	4-4
	Before Loading Paper	4-5
	Setting the Paper Thickness Lever	4-5
	Setting the Paper Selection Lever	4-6
	Setting the Paper Support	4-7
	Printer Settings for Various Print Media	4-8
	Loading Paper	4-9
	Automatically Feeding Paper	4-9
	Auto Feed Guidelines	4-13
	Manually Feeding Paper	4-15
	Printing on Envelopes	4-18
	Using Canon's Specialty Papers	4-22
	Canon's High Resolution Paper HR-101	4-22
	Fabric Sheets FS-101	4-24
5	Maintaining the Printer	5-1
	Printer Guidelines	5-2
	Cleaning the Printer	5-3
	Printing the Test Pages	5-4
	Cleaning the Print Head	5-6
	Cleaning the Print Head From Windows	5-6
	Cleaning the Print Head From Your Macintosh	5-6
	Cleaning the Print Head Using the Operator Panel	5-7
	BJ Cartridge Guidelines	5-8
	BJ Cartridge and Ink Tank Maintenance	5-10
	Replacing the BJ Cartridge	5-11
	Replacing an Ink Tank in the BC-21 Color BJ Cartridge	5-18
	Storing a BJ Cartridge	5-22
	Transporting the Printer	5-24
6	Troubleshooting	6-1
	Using Canon's Support Services	6-1
	Identifying Your Printer Problem	6-2
	General Problems	6-3
	Using the Super Solver (Windows Only)	6-3
	Clearing Paper Jams	6-4
	Technical Notes	6-5
	Appendix A Specifications	A-1
	Appendix B Sharing Your Printer Over an AppleTalk Network	B-1
	Glossary	G-1
	Index	I-1
	FCC Regulations	FCC-1

Introduction 1



Congratulations on your purchase of the Canon BJC-4550 Color Bubble Jet™ Printer. We appreciate your choosing this printer to meet your printing needs.

The BJC-4550 offers excellent print quality and fast print speed using both color and black inks. We are certain you will be satisfied with this advanced Bubble Jet technology.



This chapter:

- Lists the supplies and accessories you can purchase for the printer
- Describes Canon's customer support services

Supplies and Accessories

Your BJC-4550 printer supports excellent and unique ink and print media options that will allow you to produce dazzling, professional, and fun presentations. All of these print media are specially designed and manufactured to work with your Canon color printer so you can produce the finest output possible.



Canon has an extensive dealer network equipped to offer you supplies as you need them. To find a dealer near you, call the Canon Referral Service at **1-800-848-4123**.

If supplies are not available from your local dealer, you can order directly from Canon by calling **1-800-671-1090**.

BJ Cartridges and Ink Tanks

Your BJC-4550 comes with:

- One BC-21 Color BJ Cartridge
- One BC-20 Black BJ Cartridge
- One SB-21 BJ Cartridge Container

You can also purchase the following optional BJ cartridges for use with the printer:

- BC-22 Photo BJ Cartridge
- BC-29F Neon BJ Cartridge

You can purchase the following ink tanks for use in the BC-21 Color BJ Cartridge:

- BCI-21 Black Ink Tank
- BCI-21 Color Ink Tank



Note

BJ cartridges contain the Bubble Jet print head and ink, while ink tanks contain ink only.

You can also purchase the optional Canon BC-22 Photo Kit, which includes everything you need to produce photo-realistic images:

- BC-22 Photo BJ Cartridge
- SB-21 BJ Cartridge Container
- Canon High Resolution Paper HR-101 (60 sheets)

See Chapter 5, *Maintaining the Printer*, for details on replacing BJ cartridges.



Canon Specialty Papers

Canon manufactures numerous specialty papers, including:

- Bubble Jet Paper LC-301 (water resistant)
- High Resolution Paper HR-101
- Transparency CF-102
- Back Print Film BF-102
- High Gloss Film HG-101
- Fabric Sheet FS-101
- T-Shirt Transfers TR-101
- Greeting Cards GC-101
- Brochure Paper BP-101

See Chapter 4, *Paper Handling*, for details on Canon's specialty papers.

Getting Help From Canon

Canon provides experienced support personnel to help you in every way.



On-line Support Services

You can easily contact Canon on the World Wide Web. Our address is:

<http://www.ccsi.canon.com>

Canon provides a bulletin board service (BBS), which is useful for obtaining newly developed third-party drivers. Call **1-757-420-2000**. The protocol for the BBS is up to 28,800 bps, eight data bits, one stop bit, and no parity.

If you use CompuServe®, you can access the Canon Peripherals Forum. This allows you to talk with other users, send a message to Canon, or download printer drivers. Just type GO CANON at any CompuServe prompt.

- If you have a modem, you can contact Canon through the Web, its BBS, or CompuServe. Through these on-line services, you can find out about the latest Canon products, or you can retrieve general information about specific products.
- If you are looking for information about any Canon printer driver for a unique situation, you can contact one of the Canon on-line services.
- You can retrieve information from the on-line services at any hour of the day or night.



On-screen Support Services

Canon provides on-screen assistance with both the Visual Guide and the Super Solver.

- Canon's Visual Guide contains a wealth of information about your printer including basic operational functions, color printing, and troubleshooting. Once installed, you can select the Visual Guide from the Visual Guide tab in your printer driver or from Canon Creative.

- Canon's Super Solver is now included with Canon Creative. The Super Solver is an on-line troubleshooting guide. It includes questions and answers to any problems you may have. Once installed, you can select the Super Solver from the Visual Guide tab in your printer driver or from Canon Creative.



Fax Retrieval System

Canon provides a 24-hour, toll-free Fax Retrieval System. You can use this service to get helpful documents faxed directly to your fax machine. These documents contain useful information to assist you in the operation of your Canon printer. To access this service, call **1-800-526-4345**.

- One of the first things you may want to do after setting up your printer is call the Canon Fax Retrieval System and request an index of the documents available to you through this service. Documents will be faxed directly to your fax machine.
- The Fax Retrieval System offers up-to-date information about Canon's products as well as technical information about specific products. By reviewing the index, you can determine what information would be beneficial to your installation.



Customer Care Center

Canon provides customer support and service for all Canon printer products. If you have any questions regarding your new printer, call the Canon Computer Systems Customer Care Center at **1-800-423-2366**. Support is available from 6 A.M. to 12 MIDNIGHT Eastern Standard Time (EST) seven days a week except holidays.

- If you seem to have an operational problem, try to solve it by using the Super Solver or by referring to the troubleshooting information in your Visual Guide. If you cannot quickly resume normal operation, contact Canon's experienced support personnel at the Customer Care Center.



Canon Canada

Customer support for Canadian residents is available 24 hours a day (seven days a week) at **1-800-263-1121**.

In other countries, please contact your Canon dealer.

Servicing the Printer

The Canon BJC-4550 Color Bubble Jet Printer is designed with the latest technology to provide trouble-free operation. The Warranty Card that comes with your printer describes Canon's limited one-year warranty for its Bubble Jet printers. Be sure to read the warranty information to find out about the different service options available to you.



Note

Save your sales receipt for proof of purchase. In the event that your printer needs service, you will need your proof of purchase to obtain warranty service.

If you feel your BJC-4550 Color Bubble Jet Printer needs servicing, you can contact Canon on the World Wide Web to locate the Canon Authorized Service Facility (ASF) nearest you or to find out about the exclusive Canon InstantExchange warranty program. If you do not have access to the Web, you can call the Customer Care Center.

Using the Printer With 2



This chapter describes how to use the printer with your Windows applications. It includes:

- Installing a printer driver
- Printing a document
- Printer setup within Windows 95
- Printer setup within Windows 3.1
- The Windows tabs
- Printing speed versus color

Installing a Printer Driver

Before you can use any type of printer with your computer, you must install a printer driver. The printer driver tells the computer what kind of a printer you are using. The printer driver also controls the various settings, such as print quality and paper type. You define these settings within the printer driver, and the printer driver then communicates the settings to both the computer and the printer.



Note

You must install the BJ Printer Driver before you can use the BJC-4550 with your computer. See your *Quick Start Guide* for instructions.

Printing a Document

This procedure describes the general steps required for printing from various Windows applications. The exact steps for printing a document may vary depending on the application program you are using. Refer to your software application's documentation for the exact printing procedure.

1

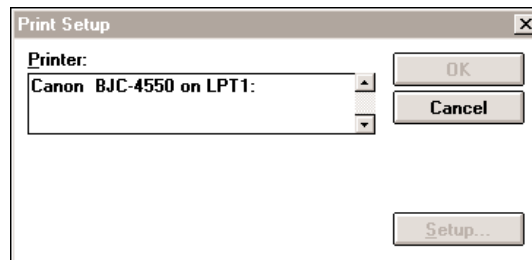
Start your application.

- Start the program you are using to create the document, and open the document you want to print.

2

Make sure the Canon BJC-4550 is selected as your default printer.

- Choose Printer Setup from the File menu.



- Click on the **Setup** button if you want to make any adjustments as appropriate for printing your document. (See *Printer Setup Within Windows 95* or *Printer Setup Within Windows 3.1* for details.)
- Select **OK** to close the Canon BJC-4550 printer driver.

3

Choose Print from the File menu.

- After making any necessary changes to the printing parameters, select **OK** to start the print job.

Printer Setup Within Windows 95

You can use the BJC-4550 with all your Windows 95 applications.

Opening the Printer Properties Dialog Box in Windows 95

You can open the Properties dialog box in one of the following ways:

- From within any Windows application, you can select the Print or Print Setup command.
- From the Printers folder, you can select the printer and then select the Properties command from the File menu.
- From the Printers folder, you can select the printer, click the right mouse button, and then select Properties from the drop down list.

Using the Printer Driver in Windows 95

The printing options are displayed on the following Windows 95 tabs: General, Details, Paper, Graphics, Setting, Control, and Visual Guide (if installed). See *The Windows Tabs* section (page 2-5) for details.



Note

For detailed information on any of the printing options, you can use the Windows 95 on-line Help:

- Use the right mouse button to click an item on the screen; then click the **What's This?** command.
 - Click **?** and then click an item.
 - Press **F1**.
-

Printer Setup Within Windows 3.1

You can use the BJC-4550 with all your Windows 3.1 applications.

Accessing the Printing Options

You can access the printing options from the Printers dialog box in the Control Panel, or you can select the Print Setup option available from the File menu of most applications that run in Windows.



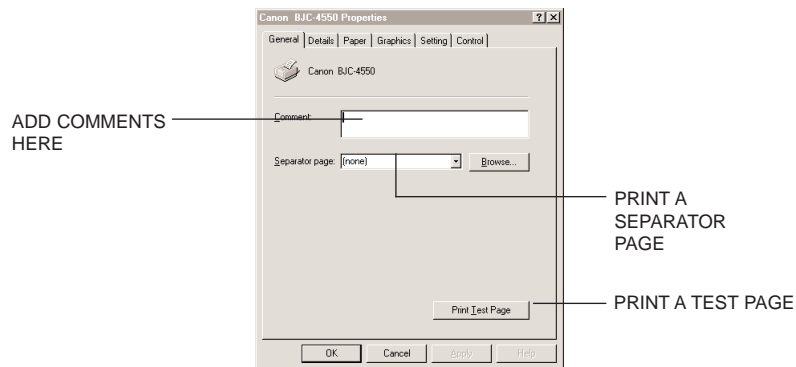
If the Print Setup option does not appear in the File menu for your application, refer to the user's manual supplied with the application. It should provide information about changing the printer setup parameters.

In Windows 3.1, the printing options are displayed on these tabs: Paper, Graphics, Setting, Control, and Visual Guide (if installed). See the next section, *The Windows Tabs*, for details.

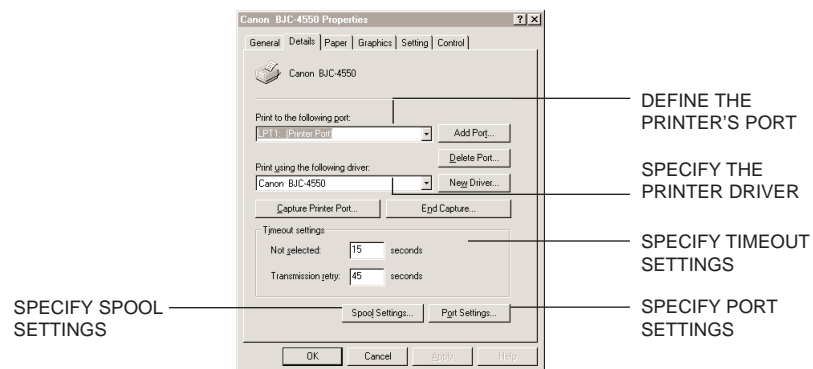
The Windows Tabs

The BJC-4550 printer driver has several tabs from which you can select your printing options and learn about your printer driver as well as the BJC-4550 printer.

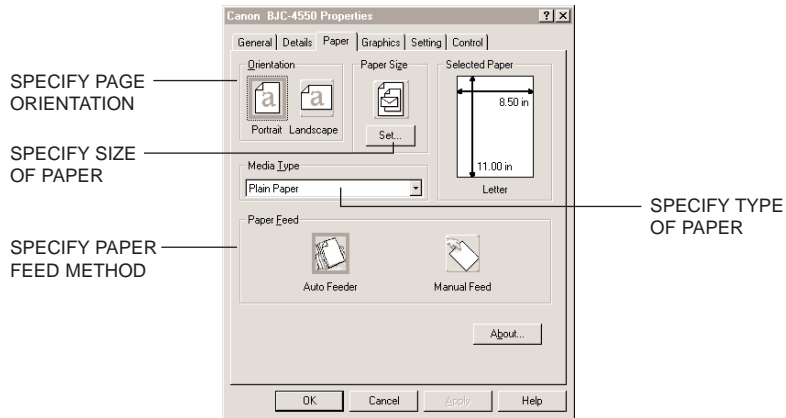
- General (Windows 95 only)
This tab allows you to add comments regarding the printer driver and print a test page or a separator page. (You see this tab when you open the Properties dialog box from the Printers folder, not from within a Windows application.)



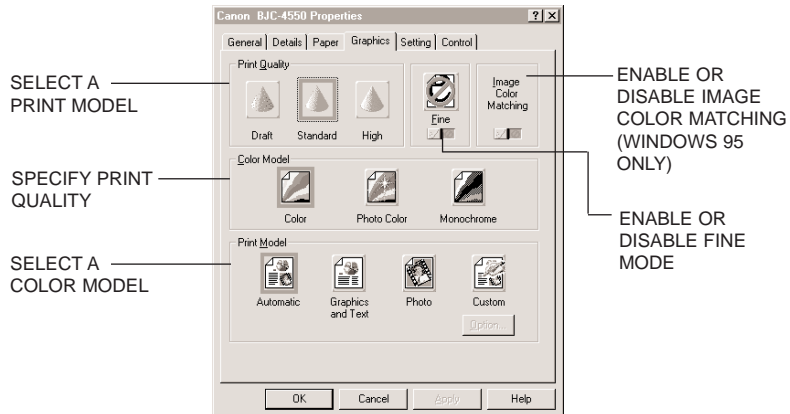
- Details (Windows 95 only)
This tab allows you to specify printer port settings, spool settings, and time-out settings. (You see this tab when you open the Properties dialog box from the Printers folder, not from within a Windows application.)



- Paper
This tab allows you to specify page orientation, paper size, and type of print media. (The printing options on this tab are the same for both Windows 95 and Windows 3.1.)

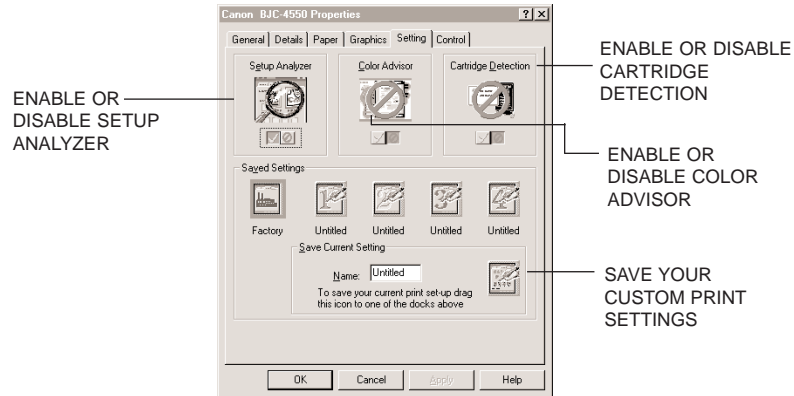


- Graphics
This tab allows you to specify print quality, color model, and print model. (The printing options on this tab are the same for both Windows 95 and Windows 3.1. However, the Image Color Matching feature is available in Windows 95 only.)



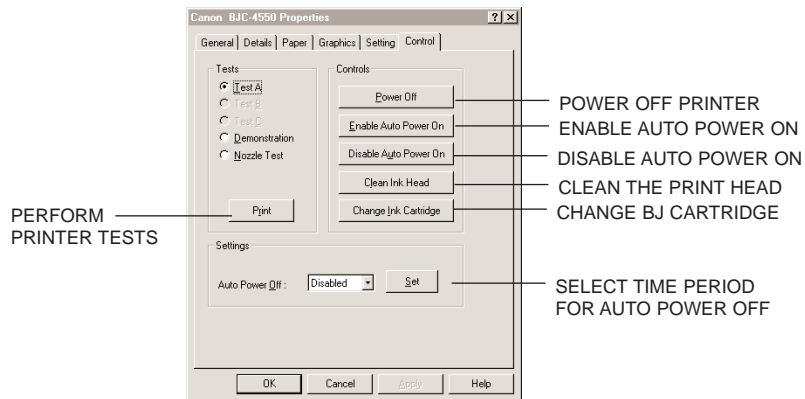
○ Setting

This tab allows you to turn on or off the Setup Analyzer and the Color Advisor. It also allows you to save up to four custom print settings. (The printing options on this tab are the same for both Windows 95 and Windows 3.1.)

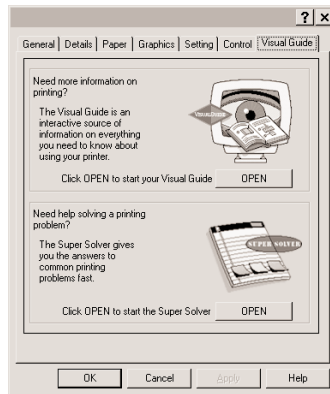


○ Control

This tab allows you to print test pages, turn the printer off, enable or disable the auto power on feature, clean the print head, or move the BJ cartridge so you can change it. It also allows you to turn off the printer after a certain period of inactivity. (The printing options on this tab are the same for both Windows 95 and Windows 3.1.)



- **Visual Guide**
This tab is selectable once you have installed either the Visual Guide or the Super Solver. From this tab you can initiate installation if either the Visual Guide or the Super Solver is not installed. Once installed, you can start either the Visual Guide or the Super Solver from this tab.



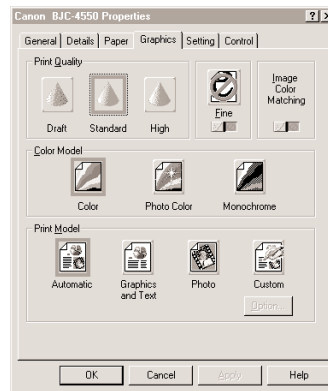
Specifying Your Printing Options

Be sure to use your on-line help to find out about the settings available for each printing option.

- To move between the Windows tabs, click on any of the tabs.
- To select the settings on a tab, click the **OK** button.
- To cancel your setting selections on a tab, click the **Cancel** button.
- To save your settings without exiting, click the **Apply** button.
- To access the Help file, click on the **Help** button.
- When you move the mouse cursor over one of the printing options, a help message appears at the bottom of the tab.

Recommended Graphics Settings

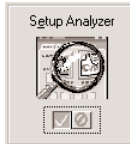
You can select the following printing options from the Graphics tab to achieve the specified results.



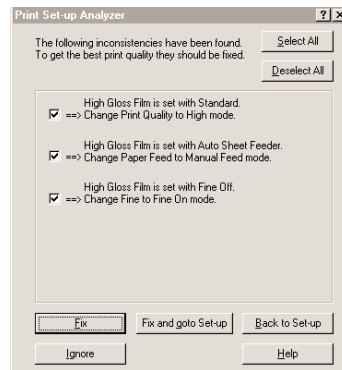
To achieve	Driver settings		Results
	Print Quality	Color Model	
Fastest B&W output possible	Draft 180 × 180 dpi	Monochrome	Uses less ink. Output quality is draft.
Fast letter quality output	Standard 360 × 360 dpi	Monochrome	Slightly slower than draft. Quality is standard.
Fast B&W photograph and graphic output	Standard and Fine 360 × 360 dpi	Monochrome	Slower than B&W but better grayscale quality.
High quality photograph and graphic output	High and Fine 720 × 360 dpi	Monochrome	Slower than Standard but optimizes B&W grayscale quality.
Fast color output	Draft 180 × 180 dpi	Color	Uses less ink. Output quality is draft.
Color output	Standard 360 × 360 dpi	Color	Fast color printing but quality is not optimized.
High quality color output	High and Fine 720 × 360 dpi	Color	Optimizes color print quality but the print speed is slower.
Photo-realistic color printing	—	Photo Color	Produces unsurpassed photo-realistic color printing. (Requires BC-22 Photo BJ Cartridge.)

Using the Setup Analyzer

The Setup Analyzer allows the printer driver to evaluate your choice of printing settings. On the Setting tab, you click on the green ✓ to enable the Setup Analyzer. Click on the red ⊘ symbol to disable it.



When you exit the printer driver and accept your printing settings by clicking the OK button, the Setup Analyzer (if enabled) checks to see if any of your settings are contrary to the recommended settings. If there are inconsistencies, a dialog box similar to this appears:

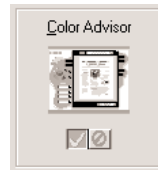


The inconsistencies appear with check boxes. You can use the dialog box buttons to select or deselect the inconsistencies and/or fix or ignore the inconsistencies.

Using Color Advisor

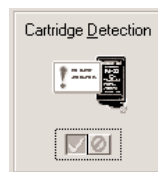
Canon's Color Advisor is automatically installed when you install the BJ Printer Driver from the Canon Creative CD. Color Advisor is a tool that colors documents even when your software application does not support color, and it expands the range of colors you can use when your application does support color. See your Visual Guide for details on using the Color Advisor.

To enable the Color Advisor, click on the green ✓. Click on the red ⊘ symbol to disable it.



Using Cartridge Detection

Use Cartridge Detection if you want the driver to alert you when the installed BJ cartridge is not the correct choice to use with your Color Model setting. To enable Cartridge Detection, which is located on the Setting tab, click on the green ✓. Click on the red ⊘ symbol to disable it.



If Cartridge Detection cannot detect the cartridge type, it advises you to check that your printer is on-line and that the cables are secure.

If you choose the Monochrome Color Model and you have a BC-21 Color BJ Cartridge installed, you'll see:

Performance Tip!

You now have a color cartridge installed in your printer. For faster printing speed, change the color cartridge to the monochrome cartridge.

Printing Speed Versus Color

The BJC-4550 Windows printer driver can interpret and translate the full spectrum of colors, up to 16.7 million colors. When printing in color, there is a significant increase in the amount of information that the driver has to interpret and translate. When printing black ink only, the driver has only one color to interpret.

By decreasing the amount of colors that the printer driver has to interpret, you can significantly decrease the time needed to translate the information. This will speed up the overall printing process.

For Quick Color Printing

In the BJC-4550 Windows printer driver, choose the following settings. These selections allow the printer driver to interpret and translate 256 colors, which will increase your printing speed. However, your print quality will not be optimized.

- Media Type—Plain Paper
- Print Quality—Standard; Fine is off
- Color Model—Color
- Print Model—Custom
- Color Selection—Fast Color

For High Quality Color Printing

Select the settings shown below to allow the printer driver to interpret and translate up to 16.7 million colors. Keep in mind that your print speed will be slower than with other setting combinations.

- Print Quality—High; Fine mode is on
- Color Model—Color
- Print Model—Automatic

For Monochrome Printing

Use the optional BC-20 Black BJ cartridge to optimize the printer's performance when you are printing black text and graphics only.

In the BJC-4550 printer driver, choose the following settings to tell your printer to print using black ink only.

- Media Type—Plain Paper
- Print Quality—Standard
- Color Model—Monochrome
- Print Model—Automatic

Other Ways to Improve Print Speed in Windows

To improve printing speed, you can try the following:

- Turn off the Print Manager in the Windows Control Panel (Windows 3.1 only).
This avoids the extra step of sending the print file to the Print Manager and may increase your printing speed by as much as 25%, depending on the computer you are using.
- Add a permanent swap file in Windows 3.1.
Under the 386 Enhanced icon in the Windows Control Panel, add or create a permanent swap file that is from 4 MB to 9 MB. The computer will be able to prepare the print file faster. See your Windows documentation for instructions.
- Avoid diffusion halftones.
In the Custom Settings dialog box, choose Diffusion only when printing final output or photographic images. Choosing a Halftone setting of Fine allows documents to print as much as 20% faster because the computer does not need to compute to “best possible position” for each dot.
- Avoid screen matched color.
In the Custom Settings dialog box, avoid Match as the Color Adjustment setting. The screen matching feature takes longer to

process in the computer because it requires special information.

- Avoid automatic settings.
Although the automatic settings are easy to use, the computer must interpret the printed page. This takes more time than if you select each setting.
- Free up your memory.
Use only one software program at a time and unload any screen-saving utilities or programs stored in Windows background; this frees up more memory for Windows processing.
- Use Monochrome when possible.
If you will be printing text in black ink only, choose a Color Selection of Black and White rather than Grayscale. Print draft documents in Monochrome rather than Color, or use Draft print quality when printing color.
- Limit the number of colors on each page.
The computer will need to calculate and transmit fewer dots. Too many colors can make the image confusing and less effective as well as cause the print speed to slow down.
- Use primary colors when printing presentation graphics.
Use black, cyan, yellow, magenta, blue, green, and red when possible. The computer will need to calculate and transfer less dot information.
- Use the Draft print quality.
The printer will need to image fewer dots.
- Use Plain Paper as the Media Type.
The print head will make only one pass for each printed line.
- Use smaller graphics and more white space in your documents.
The computer will be able to prepare the print file faster.
- Add RAM to your computer.
The computer will be able to prepare the print file faster.
- Use a computer with a faster processor.
The computer will be able to prepare the print file faster.

Using the Printer With Your Macintosh

3



You can use the BJC-4550 to print documents created with Macintosh applications.

- You must be using a Power Macintosh® or a Macintosh with at least a 68020 processor.
- Your operating system must be Macintosh System 7.1 or later and you must be using ColorSync™ 1.0.5 or later.

Before you can print using the BJC-4550, you must install the Macintosh Printer Driver. See your *Quick Start Guide* for details.

This chapter describes the basic steps for printing a document using QuickDraw™ or QuickDraw GX. QuickDraw GX is an enhanced version of QuickDraw that comes with System 7.5 and later; it supports a variety of advanced features for text and image handling. For details on the difference between using QuickDraw and QuickDraw GX, see your Macintosh documentation.

This chapter also describes how to print with Adobe™ Photoshop™ and how to use the BJ Standard Monitor profile. The Macintosh Printer Driver includes a BJC-4550 Plug-In module for use exclusively with Adobe Photoshop and a BJ Standard Monitor profile for use with ColorSync.

If you plan to share your BJC-4550 over an AppleTalk® network, see Appendix B.

Using the Printer
With Your Macintosh

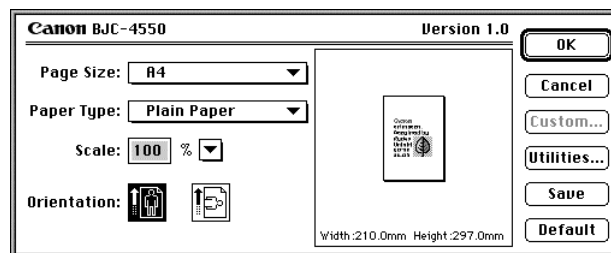
Printing a Document With QuickDraw

After you create a document, or open a document to be printed, follow these basic steps:

1

Choose Page Setup from the File menu.

- If you are using QuickDraw, you see this screen:



2

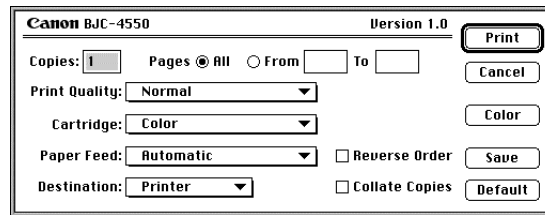
Select your Page Setup settings.

- You can select:
 - Page Size
 - Paper Type
 - Scale
 - Orientation
- For details on these settings, use the Balloon Help™ function.
- If you select a Page Size of Custom, click the **Custom** button to specify your page size.
- Click the **Utilities** button to perform printer operations. See page 3-7 for details.
- Click the **Save** button to save the current settings. When you select Page Setup later for a new document, these settings will be automatically selected.
- Click the **Default** button to restore the original default settings.

3

Choose **Print**
from the
File menu.

- You see this screen:



4

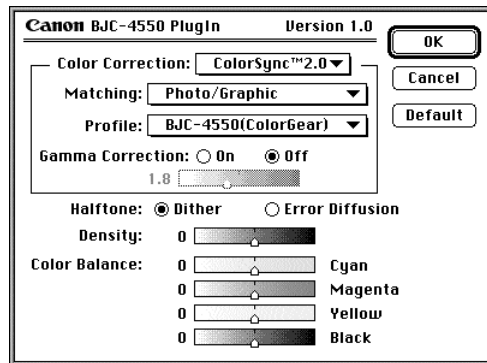
Select your
Print

- You can select:
 - Number of copies
 - Pages to print, all or a range
 - Print Quality; for Canon specialty papers, select Best
 - Type of BJ cartridge installed in printer
 - Paper feed method: auto or manual
 - Destination: printer, preview, or PICT file
 - Reverse order; starts printing with last page of document
 - Collate copies; sorts multiple copies
- For details on these settings, use the Balloon Help function.
- Click the **Color** button to change the color settings (see next section).
- Click the **Save** button to save the current settings. When you choose the **Print** command later for a new document, these settings are automatically selected.
- Click the **Default** button to restore the original default settings.

Using the Printer
With Your Macintosh

Color Dialog Box

Use the Color dialog box to set color printing settings for controlling the way colors are produced.



- For details on these settings, use the Balloon Help function.

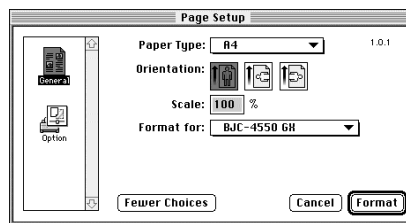
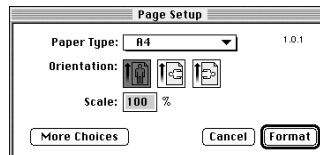
Printing a Document With QuickDraw GX

After you create a document, or open a document to be printed, follow these basic steps:

1

Choose **Page Setup** from the **File** menu.

- You see one of these screens:



2

Select your **Page Setup** settings.

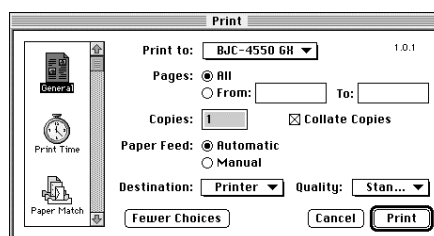
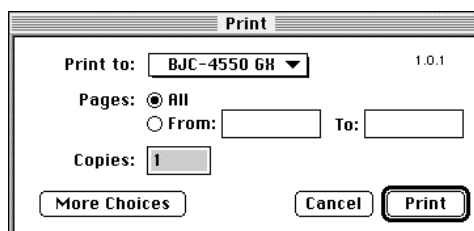
- You can select:
 - Paper Type
 - Orientation
 - Scale
- For details on these settings, use the Balloon Help function.
- Click the **Format** button to apply the Page Setup settings to the current document and close the Page Setup dialog box.
- Click the **More Choices** button to expand the dialog box to show its extensions: General and Options. These extensions allow you to adjust more detailed settings of

the Page Setup dialog box. Use the Balloon Help function for details.

3

Choose **Print**
from the
File menu.

- You see one of these screens:



4

Select your
Print

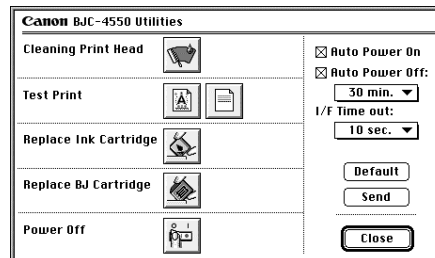
- You can select:
 - Printer to print to
 - Pages to print, all or a range
 - Number of copies
- For details on any of these settings, use the Balloon Help function.
- Click the **Print** button to start printing.
- Click the **More Choices** button to expand the dialog box to show its extensions: General, Print Time, Paper Match, Options, and Color. These extensions allow you to adjust more detailed settings of the Print dialog box. Use the Balloon Help function for details.

Using the Utilities Dialog Box

The Utilities dialog box allows you to perform various printer utility functions. How you select the Utilities dialog box depends on whether you are using QuickDraw or QuickDraw GX.

- If you are using QuickDraw, you click the **Utilities** button on the Page Setup dialog box.
- If you are using QuickDraw GX, you select Utilities from the Printing menu in the menu bar.

You see this screen:



From this screen, you can:

- Clean the print head
- Print a test page
- Replace the BJ cartridge or an ink tank; this positions the cartridge holder in the center of the printer
- Power off the printer
- Enable or disable the auto power on/off feature and set a time
- Set the I/F time out

For details on any of these settings, use the Balloon Help function.

Click the **Default** button to return the Auto Power On, Auto Power Off, and I/F time out settings to their original default settings.

Click the **Send** button to save the current Auto Power On, Auto Power Off, and I/F time out settings and send them to the printer.

Printing With Photoshop

A BJC-4550 Plug-In module is provided with the Macintosh Printer Driver for use exclusively with Adobe Photoshop. It provides faster printing and can handle larger images than the standard print menu.



Note

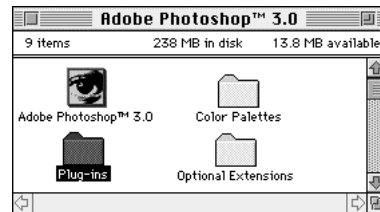
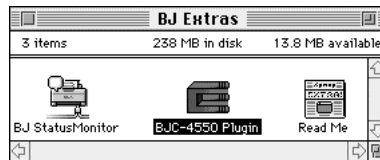
The BJC-4550 Plug-In supports printing when your printer is connected directly to your Macintosh and not when printing over a network.

Installing the BJC-4550 Plug-In

1

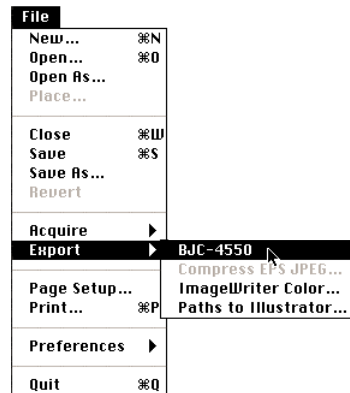
Copy the
BJC-4550
Plug-In.

- Copy the BJC-4550 Plug-In from the BJ Extras folder to the Photoshop Plug-Ins folder.
- The BJ Extras folder was created on your desktop when you installed the driver.



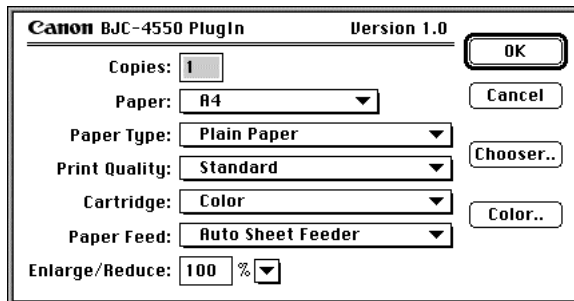
Open or Create a Photoshop

- Then select BJC-4550 from the Export submenu in the File menu.
- The BJC-4550 Plug-In dialog box is displayed.



BJC-4550 Plug-In Dialog Box

To print using the BJC-4550 Plug-In module, first make any necessary changes to the settings. After making the desired changes, click the **OK** button to start printing.



You can set the following items:

Copies

Specify the number of copies you want to print.

Paper Size

Select the paper size you are using.

Paper Type

Select the paper type according to the media to which you want to print. Selecting the paper type automatically sets the recommended resolution (print quality) and paper feed method. Make sure that the paper is loaded in the printer properly and the paper thickness lever is positioned correctly. See chapter 4, *Paper Handling*, for details.

Print Quality

Select the quality of print. For example, for test printing and high speed, select Draft.



Note

For best results, select high quality modes when using paper made exclusively for BJ printers.

Paper Feed

Specify either manual paper feed (one sheet at a time) or automatic paper feed using the auto sheet feeder. Manual feed is recommended when printing on High Gloss Film or Fabric Sheet media.

Enlarge/Reduce

Define a scaling value between 25% and 400%. Click the down arrow next to Enlarge/Reduce to select a standard scaling value according to the paper size selected. If the scale value that you want is not listed, you can also enter a value in the Scale box.

Chooser Button

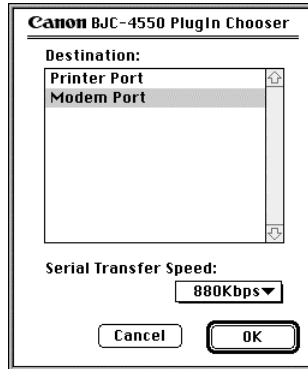
Display the BJC-4550 Plug-In Chooser dialog box from which you can select the printer port.

Color Button

Display the Color dialog box to define color settings for printing.

Plug-In Chooser dialog box

Use this dialog box to select to which port to send the print data. Click the **OK** button to save your selections and return to the BJC-4550 Plug-In dialog box.



You can see the following items:

Destination

Select the port to which your printer is connected.



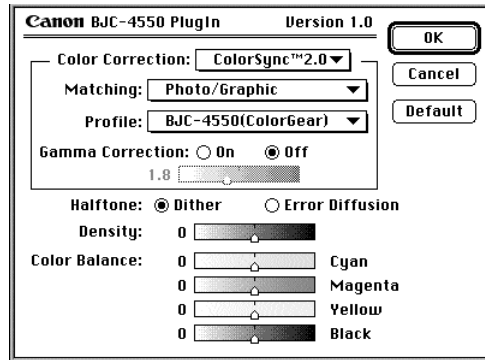
The BJC-4550 Plug-In supports printing when your printer is connected directly to your Macintosh and not when printing over a network.

Communication Speed

Select the transfer speed for sending data to the printer. Choose a speed of 880, 440, or 57 Kbps.

Color dialog box

Use the Color dialog box to adjust print colors. Click the **OK** button to accept the displayed settings and return to the BJC-4550 Plug-In dialog box.



You can set the following items:

Color Correction

Specify whether to make color corrections using ColorSync. When you select either ColorSync 1.0 or ColorSync 2.0, you should also set the Matching Gamma Correction settings. If ColorSync is not available, Color Correction will be set to None.

Matching

Specify the color matching method for ColorSync color correction. Both Auto and Photo/Graphics selections are suitable for documents mixed with photos and graphics. However, the application program controls color matching when Auto is selected, while the printer driver controls color matching when Photo/Graphics is selected. The selection Spot Color is usually best for color matching in documents that use basic colors.

Color Profile

Select a color profile to match the paper type.

Gamma Correction

Specify whether or not to use standard color brightness or to adjust brightness manually. Select Off to print with standard color brightness, or select On to adjust the brightness with the slide bar. Move the bar to the right for a higher gamma correction and darker color printing.

Halftone

Specify a halftone method. Dither is usually best for printing high-contrast graphics and large amounts of text, while Error Diffusion is usually best for printing photos providing a more realistic appearance.

Density

Adjust color saturation of the printout without affecting color hue. Move the slide bar to the left for less saturation (lighter colors) and to the right for more saturation (darker colors). You can choose a value between -50 and +50.

Color Balance

Adjust the color hue of the printout. There is one slide bar for each of the four color inks. These are dimmed and cannot be adjusted when Monochrome/Halftone or Greyscale is selected in the Photoshop mode menu.

Default button

Restore the Color dialog box settings to their original default settings.

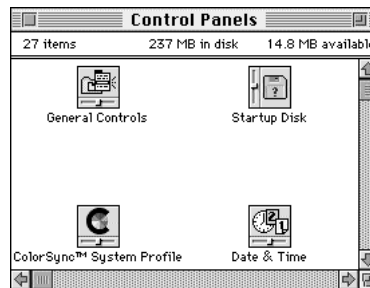
Using the BJ Standard Monitor Profile

The BJ Standard Monitor profile for use with ColorSync is provided with the BJC-4550 to help you obtain the best possible color printing results and to get optimum efficiency from the printer. When selected as the ColorSync profile, the BJ Standard profile optimizes performance for the BJC-4550 and helps to produce clear and vivid color printing. You need to set this selection only once—not each time you print.

Select the BJ Standard profile as follows:

1

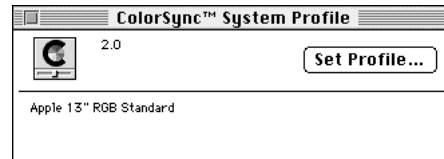
Open the Control Panels folder from the



2

Double-click
the
ColorSync
System

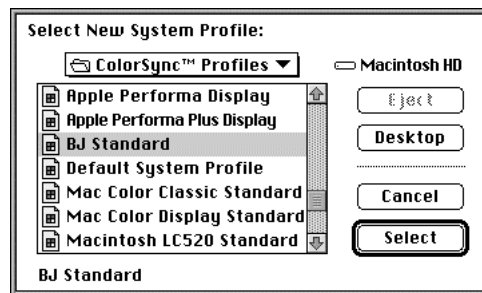
- You see this window:



3

If BJ
Standard is
not shown
as the
profile, click

- You see this dialog box:



- Choose BJ Standard and click the Select button.
- Close the ColorSync control panel.

Paper Handling 4



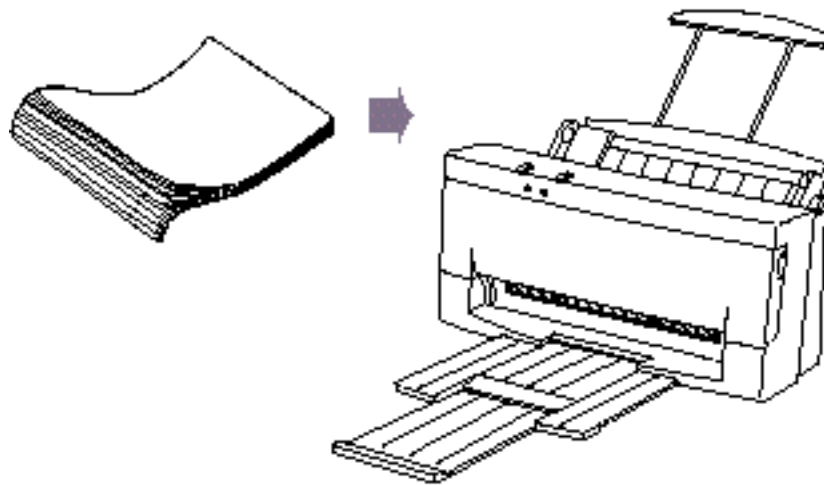
This chapter describes how to use the printer for all your printing operations. It includes:

- Selecting paper
- Setting the paper thickness lever
- Summary of printer settings for various print media
- Automatically loading paper
- Manually feeding paper
- Printing on envelopes
- Using Canon specialty papers

To ensure the best performance of your printer, you'll want to select the best paper and load it correctly. You can stack paper in the sheet feeder to load it automatically, or you can manually feed one sheet at a time.

Selecting Paper Types

One of the most important things you can do to assure the best possible performance of your Bubble Jet printer is to select the correct paper. Your printer produces letter quality print on most plain bond papers, including cotton bond and photocopying papers; it does not require special ink jet papers. However, the print quality varies with different paper types. Be sure to test a type of paper before you purchase a large quantity.



Plain Paper

The printer supports paper sizes of letter, legal, and A4 in portrait orientation. You can use regular copier paper, cotton bond papers, and typical letterhead. Always use paper without curls, folds, staples, or damaged edges.

Bubble Jet Paper (water resistant)

The Canon Bubble Jet Paper LC-301 has been developed for high quality printing with minimal or no smearing or running when in contact with water or damp surfaces, making it a good choice for damp or rainy environments. The paper is specially coated and printable on both sides.

High Resolution Paper

The Canon High Resolution Paper HR-101 is designed to produce near-photographic quality print output with sharp and vivid graphics. For best results, use the optional BC-22 Photo BJ Cartridge to produce images comparable to your favorite photographs.

Transparencies

Transparency CF-102 from Canon is recommended. These transparencies produce excellent contrast, sharpness, and color.

Back Print Film

Canon Back Print Film BF-102 has been specially developed for Canon Color Bubble Jet printers. The film is designed to deliver brilliant, high-intensity color images suitable for business presentations, design work, or professional reports. Back print film is printed on the back (nonglossy) side of the film in mirror image and then viewed from the front or glossy side using a backlighting device. For more details, ask a Canon Authorized Dealer for information or refer to the manual supplied with the film.

High Gloss Film

The Canon High Gloss Film HG-101 features a bright white finish that lends striking visual power to charts, graphs, and photographic images. Use this film to make your presentation materials and graphics look professional.

Fabric Sheets

Use Fabric Sheet FS-101 for Canon Bubble Jet printers to print banners, pillow covers, scarves, flags, and other textile items. Use these sheets for appliqués and other craft and sewing projects. Fabric sheets are 9.5 × 14 inches.

T-Shirt Transfers

Use Canon's popular T-Shirt Transfers TR-101 to create and personalize T-shirts, sweatshirts, aprons, tablecloths, napkins, tote bags, and anything else your imagination allows! Use on any cotton or cotton/poly blend fabric. Your image is printed in mirror image (when you use T-Shirt Transfer mode through the BJC-4550 Printer Driver) so when you iron it onto the T-shirt, the image is viewed correctly.

Greeting Cards

Get the most out of your Canon Creative or other card making software with Canon Greeting Cards GC-101. These cards give your unique, personalized cards the look and feel of professional cards. You can

create cards, invitations, announcements, and more.

Brochure Paper

Canon's Brochure Paper BP-101 is specifically designed for creating high quality brochures on glossy paper. Combined with Design Essentials from Canon Creative, you have everything you need to create professional half-fold, tri-fold, and full sheet brochures. Each glossy sheet is coated on both sides to allow manual duplex printing.



Note

If you are printing in an application outside Windows, your software application or printer driver must support mirror image printing in order to use Back Print Film or T-Shirt Transfers.

Paper Guidelines

When selecting or loading paper, please remember the following:

- Attempting to print on damp, curled, wrinkled, or torn paper can cause paper jams and poor print quality.
- Use cut-sheet paper only. You cannot use multipart paper.
- When using graph paper, the lines may not match because the 1/6-inch line spacing of the printer is slightly less than that of graph paper.
- If the print density of your page is very high, light paper stock may curl slightly due to the large amount of ink. If you need to print dense graphics, try printing on heavier stock.
- Do not use thicker paper than meets the specifications for this printer. Printing with a paper that is thick enough to come in contact with the print head nozzles may damage the BJ cartridge.
- When printing on legal size paper (or larger), do not extend the paper output tray.

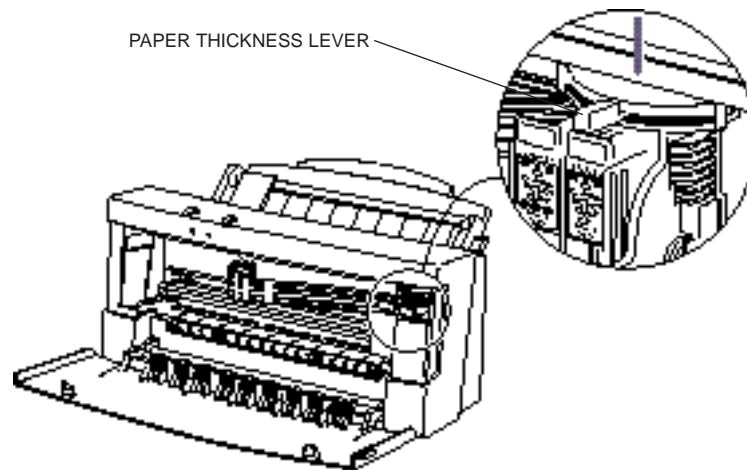
Before Loading Paper

To ensure trouble-free paper handling, you'll want to set the paper thickness lever, the paper selection lever, and the paper support before loading paper.

Setting the Paper Thickness Lever

Set the lever according to the thickness of the paper and the type of BJ cartridge you are using:

- Center for the BC-21 Color BJ Cartridge
- Left for the BC-20 Black BJ Cartridge
- Right for the heavier-weight print media or envelopes

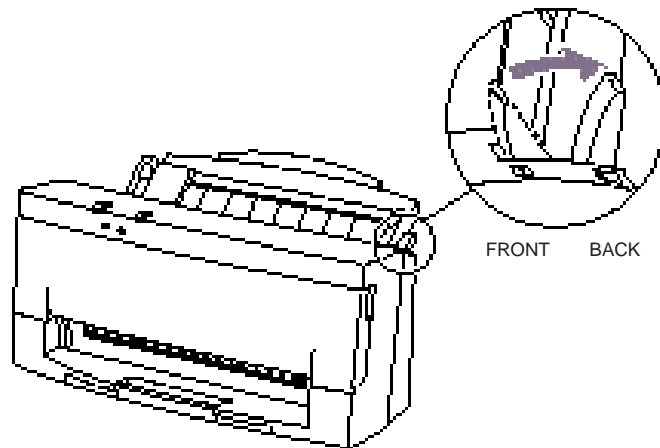


Note

Be sure to check this lever when you change BJ cartridges, and before and after printing on heavier-weight print media or envelopes.

Setting the Paper Selection Lever

- The back position is for automatically feeding plain paper.
- The front position is for manually feeding heavier-weight print media.



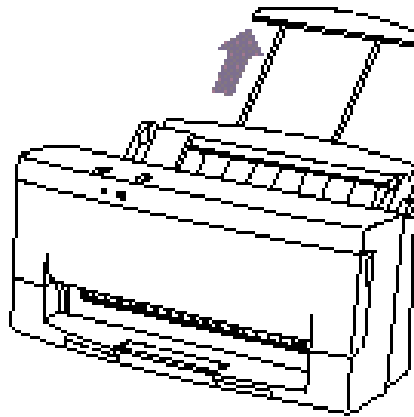
Note

-
- Do not move this lever after loading paper in the sheet feeder.
 - This lever is different from the lever on a typewriter or dot matrix printer. You need not pull it forward to load paper. You set the paper selection lever to the front position only when loading envelopes or glossy paper, or when manually feeding paper. If it is set to the front position when you are automatically feeding stacks of normal paper, the printer may feed multiple sheets or jam.
 - Be sure to remove any paper from the sheet feeder before setting the paper selection lever.
-

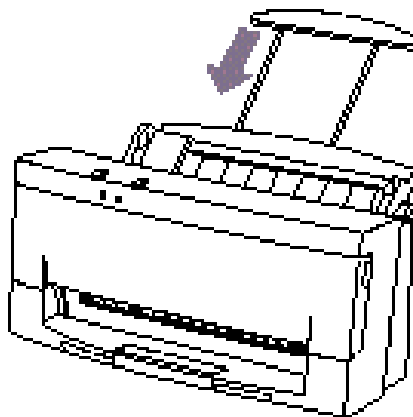
Setting the Paper Support

Set the paper support before loading paper and do not move it after loading paper.

- Extend the paper support for automatically loading a stack of paper.



- Lower the paper support for manually feeding paper.



Printer Settings for Various Print Media

Media (Sheets)	Paper thickness lever		Paper selection lever	Paper support	Paper feed	
	BC-20	BC-21			Method	Limit
Plain paper	Left	Center	Back	Up	Auto	Approx. 100 (0.4" stack)
Bubble Jet Paper (LC-301)	Left	Center	Back	Up	Auto	Approx. 100 (0.4" stack)
High Resolution Paper (HR-10)		Center	Back	Up	Auto	Approx. 80 (0.4" stack)
Transparency (CF-102)		Center	Back	Up	Auto	50
Back Print Film (BF-102)		Center	Back	Up	Auto	10
High Gloss Film (HG-101)		Center	Front	Down	Manual	1
Fabric sheet (FS-101)		Right	Front	Down	Manual	1
T-Shirt Transfers (TR-101)		Right	Front	Down	Manual	1
Greeting Cards (GC-101)		Right	Front	Down	Manual	1
Brochure Paper (BP-101)		Right	Front	Down	Manual	1
Other heavier-weight print media		Right	Front	Down	Manual	1
Envelopes						
Stacked		Right	Front	Up	Auto	15
Single		Right	Front	Down	Manual	1

Loading Paper

You can stack paper in the sheet feeder to load it automatically, or you can manually feed one sheet at a time. The path that the paper travels through the printer is the same for automatic and manual feeding.

You can place approximately 100 sheets of plain paper (20 lb or 75 g/m²) in the sheet feeder at a time.

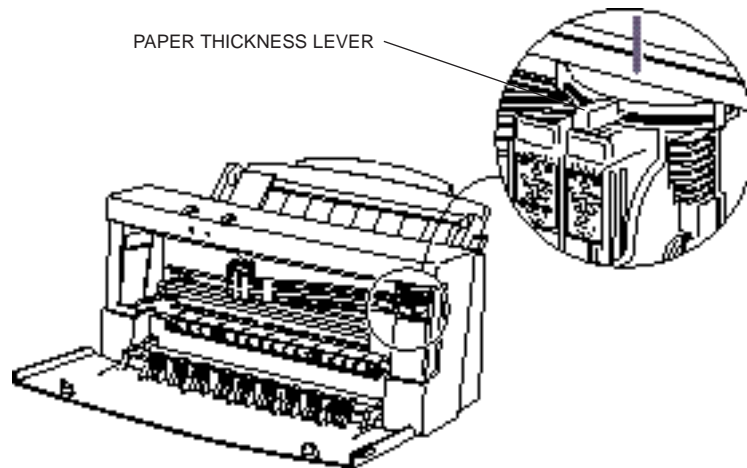
You can stack approximately 50 sheets of transparency film or back print film in the sheet feeder. However, these special media may not advance correctly under unusual environmental conditions (such as extreme temperatures or humidity). If you have trouble with special papers becoming skewed or feeding multiple sheets, do not stack them in the sheet feeder. Load them one sheet at a time.

Automatically Feeding Paper

1

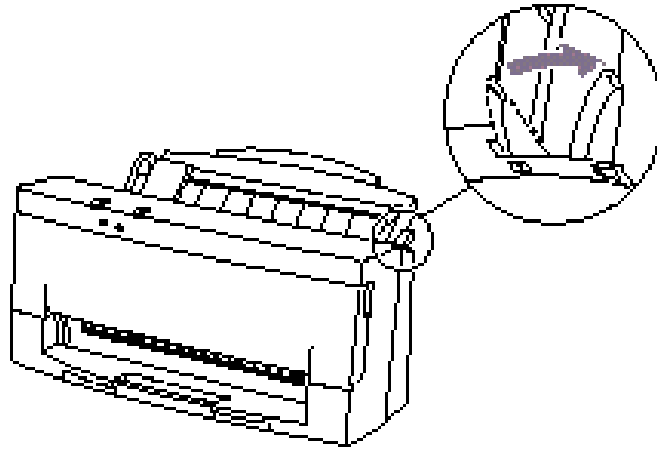
Set the paper thickness lever.

- Center for the BC-21 Color BJ Cartridge.
- Left for the BC-20 Black BJ Cartridge.



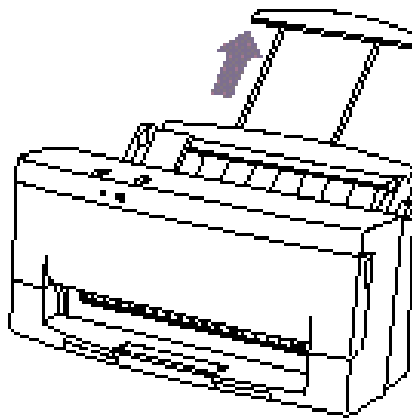
2

Make sure
the paper
selection
lever
is set to the



3

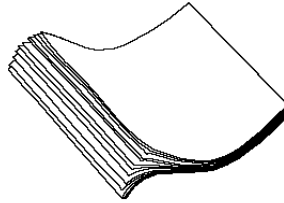
Pull the
paper support
up
until it
stops.



4

Fan the paper.

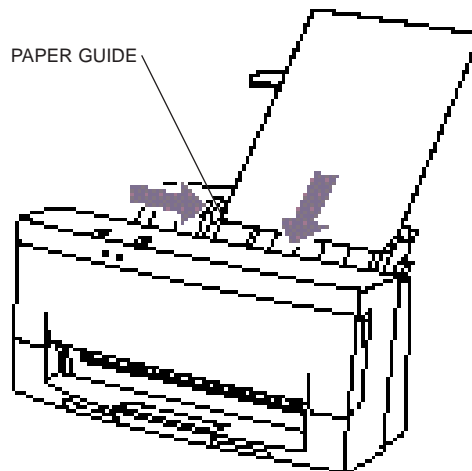
- For best results, fan the paper before loading it.
- Always fan a stack of paper along the edge that will feed into the printer first.



5

Slide the stack of paper into the sheet

- Align the edge of the paper with the right edge of the sheet feeder.
- Secure the stack with the paper guide.

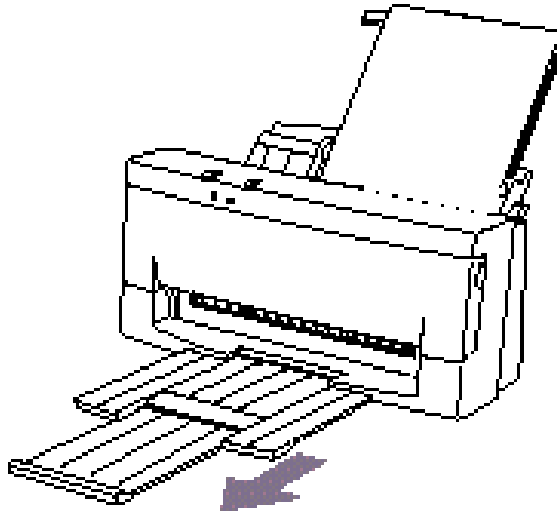


Paper Handling

6

Pull out the paper output tray and its extension.

- For letter-size and A4-size paper, extend the paper output tray.



7

Start your print

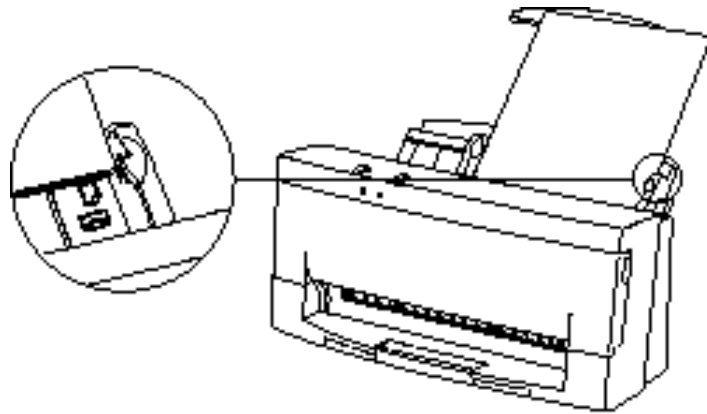
- Make sure that the printer is turned on.

Auto Feed Guidelines

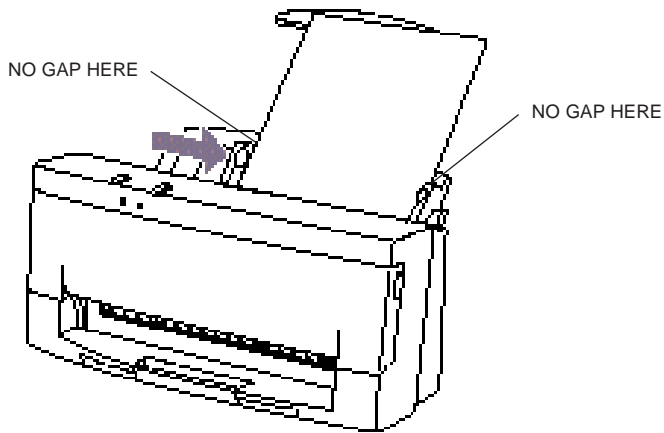
When automatically feeding stacks of paper, follow these guidelines:

- Do not open the front cover while printing. This may cause paper jams, smudges, or malfunctions.
- Do not leave paper stacked in the printer for long periods of time; longer sheets of paper may become bent or curled over time. This may cause the paper to misfeed or jam.
- If your printed page contains lots of graphics, the ink on the page may be damp due to the print density. Remove the page right away and allow the ink to dry.
- The capacity of the paper output tray is 20 sheets of paper. To reduce paper jams, remove paper from the output tray before the count reaches 20.
- If paper curls after printing, remove it immediately; otherwise, paper jams may occur.
- The platen (a roller on the inside of the printer) may become inked if you print data beyond the width of the page. If this happens, clean the platen with a soft cloth. (For details on cleaning the platen, see page 5-3.)
- Depending on the density of your printed pages, the ink may need time to dry. Within two to three seconds, the ink becomes smudge resistant. After drying for several minutes, the ink becomes water resistant.

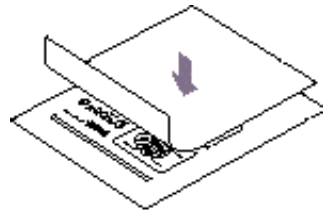
- Do not try to load paper into the sheet feeder beyond the paper limit mark (▶) or the tab on the right side of the sheet feeder; stacking too much paper may cause paper feeding or printing problems.



- Make sure there are no gaps between the stack of paper and the paper guide nor the right edge of the sheet feeder.



- When automatically feeding transparencies or back print film, remove each sheet after it is delivered. Do not allow film sheets to stack up in the paper output tray.
- Let the printed sheets of film dry completely before storing them. The complete drying time required for Canon's transparencies or back print film is approximately 15 minutes.
- When a sheet of film has dried completely, cover its printed side with a sheet of plain (not coated) paper before storing it; this is recommended even if you place the sheets of film in a clear file.

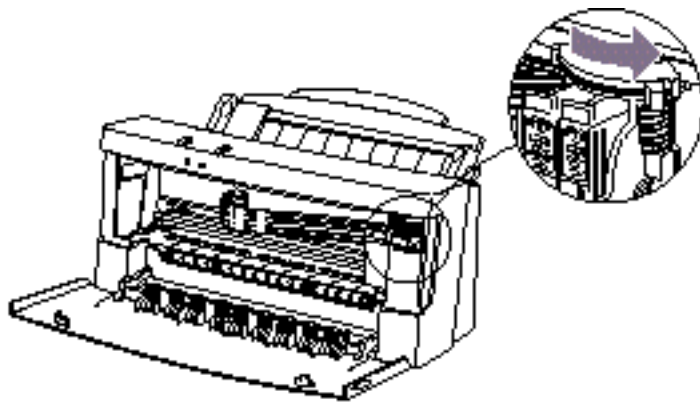


Manually Feeding Paper

You use the manual feed function when printing on heavier weight paper (24 lb to 28 lb or 91 g/m² to 105 g/m²).

1

If you are manually feeding thick paper, set the paper thickness

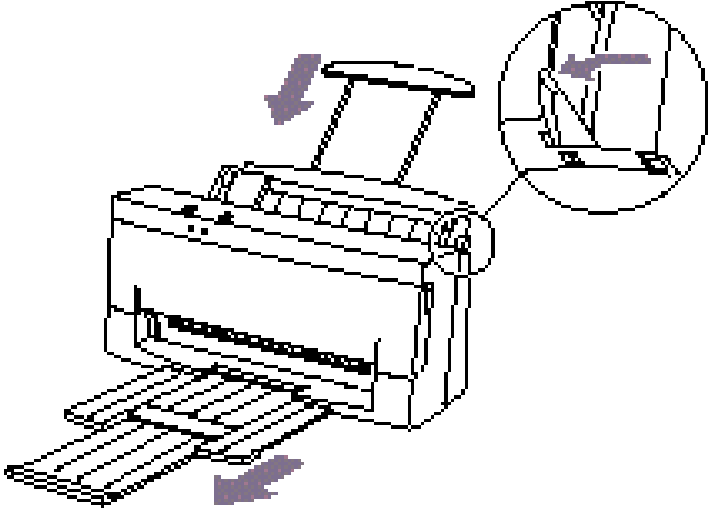


Paper Handling

2

Set the paper selection lever to the

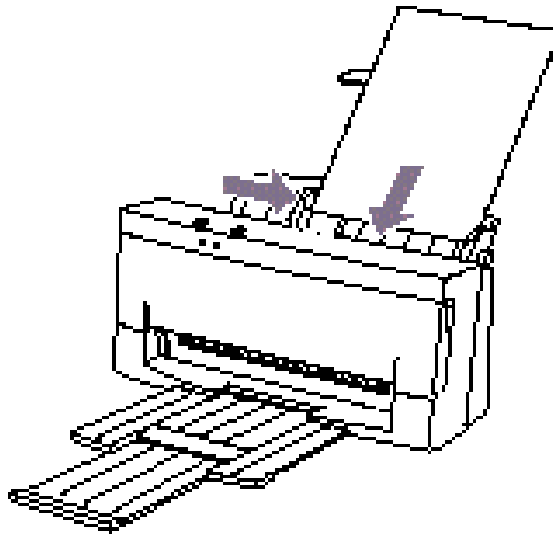
- Lower the paper support until it stops.
- Pull out the paper output tray if necessary.



3

Insert the single sheet.

- Slide in the paper until it stops inside the sheet feeder and hold it for about two seconds.
- Align the sheet with the right edge of the sheet feeder.
- Adjust the paper guide to the sheet.
- The printer will automatically load the paper into position.



4

Start your print operation.

- If you are using Windows, you must select Manual Feed in the BJC-4550 printer driver for the printer to accept manually fed paper.
- After printing on thick paper or envelopes, set the paper thickness lever (inside the printer) back to the left or center position before printing on other paper types.
- After manually feeding a sheet of paper or an envelope, set the paper selection lever to the back position and extend the paper support.

Printing on Envelopes

You can stack up to 15 envelopes in the sheet feeder or you can manually feed envelopes one at a time.

U.S. Commercial number 10 (COM10) envelopes and European DL envelopes are recommended. You may be able to stack envelopes of other sizes in the sheet feeder; however, Canon cannot guarantee consistent performance on envelope sizes other than COM10 and DL.

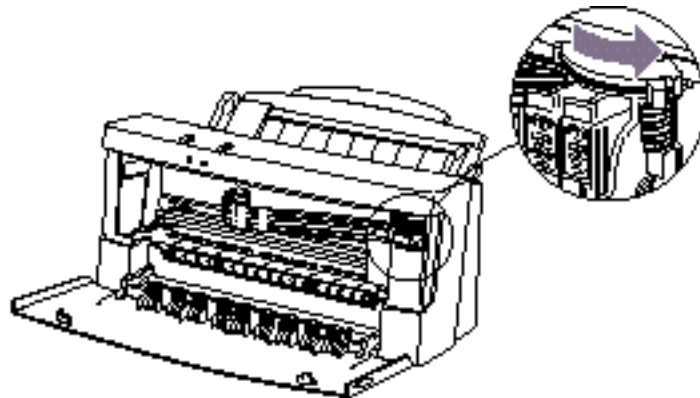
The following envelopes are not recommended because they may cause jams or smears, or may damage your printer.

- Envelopes with windows, holes, perforations, cutouts, and double flaps.
- Envelopes made with special coated paper or deeply embossed paper.
- Envelopes using peel-off sealing strips.
- Envelopes in which letters have been enclosed.

When you are ready to print on envelopes, follow these steps to stack envelopes in the sheet feeder. (You can also manually feed envelopes one at a time.)

1

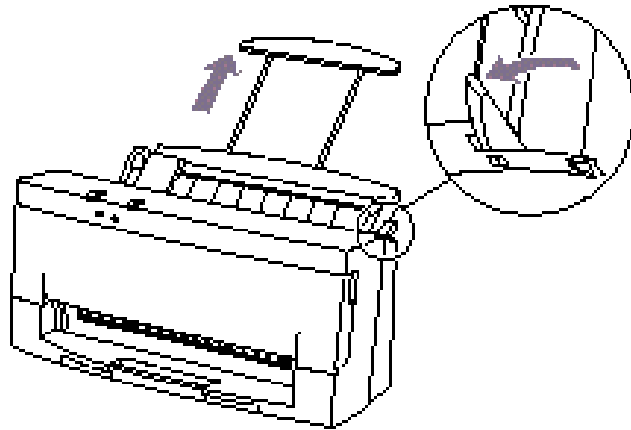
Make sure
that the
paper
thickness
lever is set



2

Set the paper selection lever to the

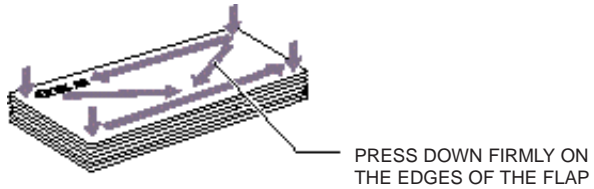
- Make sure the paper support is raised.



3

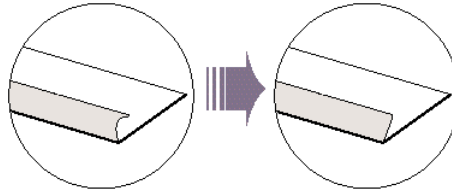
Prepare the envelopes.

- Arrange the stack of envelopes on a firm surface and press down firmly on the edges to make the folds crisp.
- Press all the way around the envelopes to remove any curls and expel air from inside the envelopes.



4

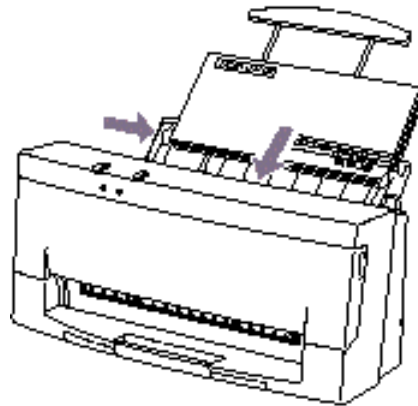
Make sure any curls are removed from the flap of each



5

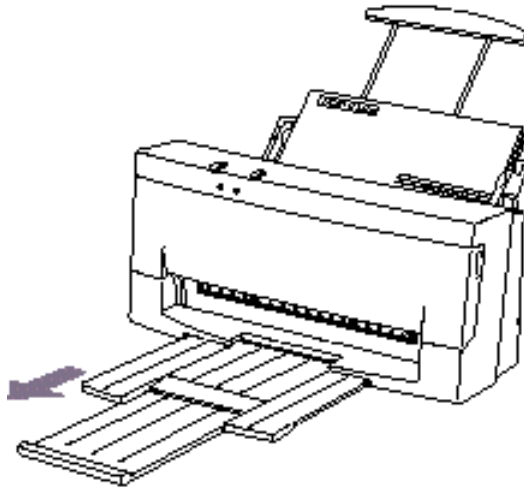
Insert the envelopes.

- Slide a stack of envelopes into the sheet feeder until it stops.
- Align the edge of the paper guide with the left edge of the stack of envelopes.



6

Pull out
the paper
output tray.



7

Start your
print
operation.

- Make sure the printer is on.

Using Canon's Specialty Papers

This section describes how to use the cleaning sheet that comes with the Canon High Resolution Paper and how to use the Fabric Sheets for Canon printers.

Canon's High Resolution Paper HR-101

Canon's High Resolution Paper HR-101 is designed for high quality printing. This paper is specially coated to produce delicate color output. After using a package of High Resolution Paper (200 sheets), you need to use the cleaning sheet enclosed with the paper to remove paper dust from the printer's rollers; this will help prevent paper feed problems.

Using the Cleaning Sheet

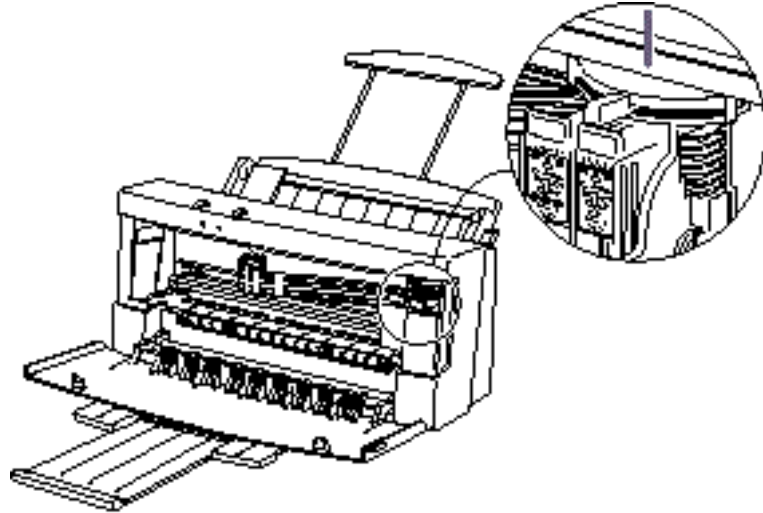
1

Set up
the printer.

- Make sure the paper thickness lever is to the center.
- Make sure the paper support and paper output trays are extended.



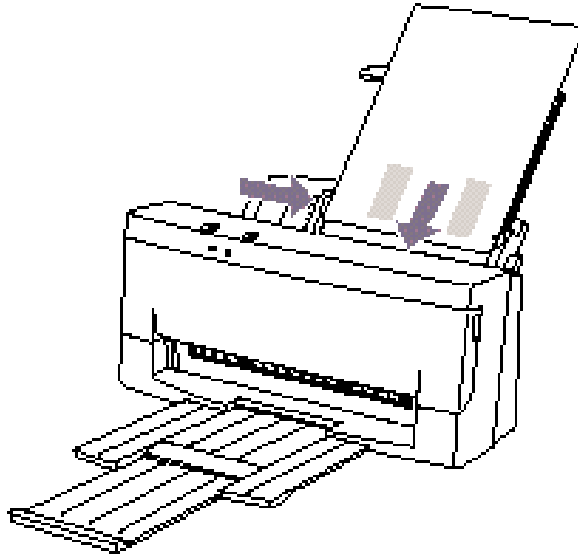
PAPER THICKNESS
LEVER



2

Insert the
cleaning

- Remove the two pieces of tape from the sheet.
- Insert the sheet with the sticky side out (toward you) and down (going into the sheet feeder).
- Adjust the paper guide to the edge of the cleaning sheet.



Press the
RESUME

- Make sure the printer is on.
- Press **RESUME** to advance the cleaning sheet into the printer.
- Press **RESUME** again to start cleaning.
- The printer feeds the sheet and then ejects it.
- Use a cleaning sheet once only.

Fabric Sheets FS-101

Fabric sheets FS-101 for Canon printers come with a booklet that describes special handling procedures. Be sure to look through this booklet for special information regarding the Fabric Sheets. This section describes specific steps for using Fabric Sheets with the BJC-4550.

Be sure to follow these guidelines.

- To avoid paper jams, smearing, and other problems, do not open the printer's cover during printing.

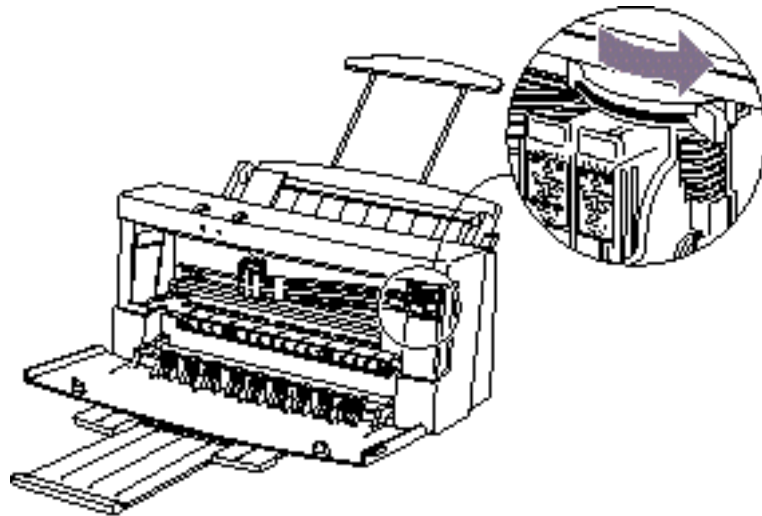
- Use the fixing agent that comes with the Fabric Sheets FS-101.
- Do not touch newly printed fabric sheets until the ink is completely dry. This takes about one hour.

Printing On a Fabric Sheet

1

Set up
the printer.

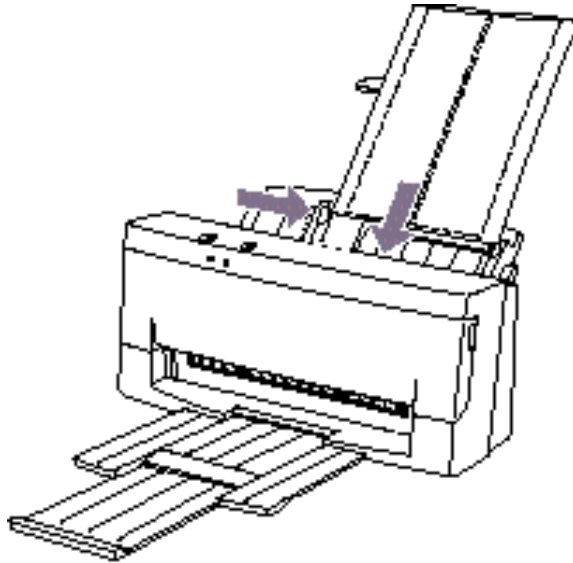
- Make sure the paper thickness lever is to the right position.
- Make sure the paper support and paper output tray are extended.



2

Insert the
fabric sheet.

- Insert the sheet with the cloth side out (toward you) and the open end up (away from the sheet feeder).
- Adjust the paper guide to the edge of the fabric sheet.



3

Set up
the Windows
printer

- In the Paper tab, select A4 for the Paper Size and select Fabric Sheet for the Print Media.
- In the Graphics tab, select High for the Print Quality. You may also want to select Fine mode.
- Start the print operation from your Windows application.

Maintaining the Printer 5



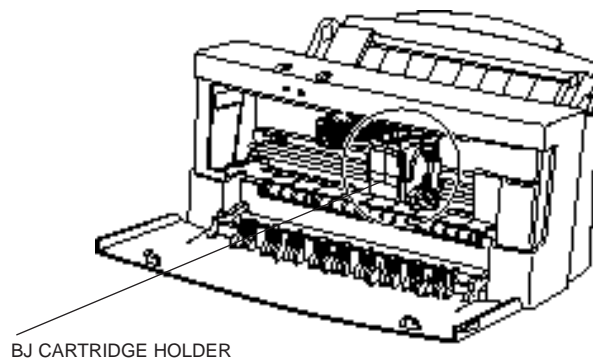
This chapter covers the care required for your Canon BJC-4550 Color Bubble Jet Printer. It includes:

- Printer guidelines
- Cleaning the printer
- Printing test pages
- Cleaning the print head
- BJ cartridge guidelines
- Replacing the BJ cartridge and/or an ink tank
- Storing a BJ cartridge
- Transporting the printer

Printer Guidelines

Follow these guidelines to avoid damage to your printer and harm to you or others:

- Set the printer on a stable surface. Do not use an angled printer stand. Avoid setting the printer in direct sunlight.
- Keep the front cover closed when printing.
- Do not set anything on top of the printer.
- Always use a three-wire, grounded power receptacle (electrical wall outlet with three holes) for your printer's power cord. Do not modify the plug to remove the ground pin.
- Make sure the power is off any time you connect or disconnect the power cord or interface cable.
- Do not unplug the power cord unnecessarily.
- Do not unplug the printer or turn off a power strip to which the printer is attached when the printer's power is turned on. This may prevent the print head unit from returning to the *home position* on the right and being capped, which may cause the print head to dry out. This is critical. If left uncapped, the print head unit may clog and may need to be replaced.
- Do not move the mechanism that holds the BJ cartridge. Attempting to move the BJ cartridge holder may damage delicate mechanical parts.



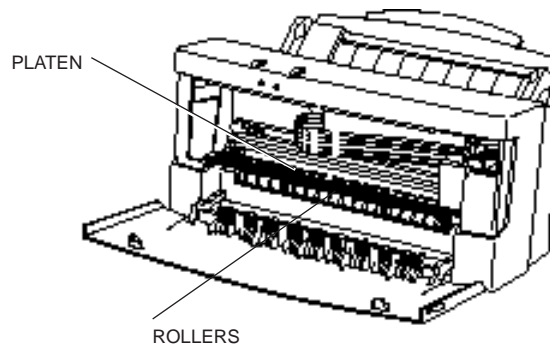
Cleaning the Printer

Your printer requires little routine maintenance. Perform the following maintenance, as necessary, to keep your printer in good operating condition.



- Make sure the printer is turned off before cleaning it. It is a good idea to unplug the power cord also.
- Do not clean the exterior of the printer with volatile liquids such as thinners, benzine, or any spray-type or chemical cleaners; doing so will damage the surface of the printer.
- When cleaning the printer, avoid the area near the print head on the BJ cartridge. Do not touch the print head. Ink may leak out and cause stains.

Clean the printer regularly to avoid printing problems. Remove any ink mist or paper debris from the interior of the printer using a soft cloth moistened with water. Clean especially well around the platen area. If the rollers become dirty, you can clean them using a small soft brush.



Clean the exterior of the printer with a soft cloth moistened with water. Clean away smudges and dust.

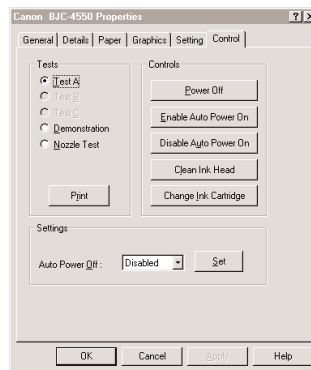


Do not use paper products (such as paper towels or tissues) to clean the inside of the printer.

Printing the Test Pages

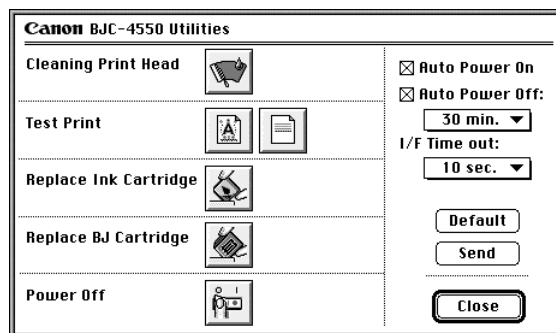
From Windows

You use the Tests option on the Control tab in your BJC-4550 printer driver to print a self test, demonstration page, or a nozzle test pattern. You can use these test prints to check the operation of your printer and your print quality. Click on the Tests option and then click on the **Print** button.

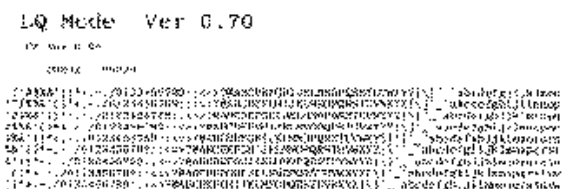


From Your Macintosh

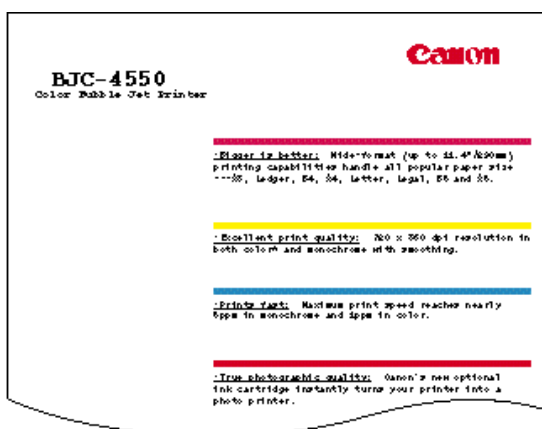
You select the Test Print function from the Utilities dialog box. Click on either of the Test Print options.



Test A
This test prints a repeating pattern of characters.



Demonstration
This test prints a sample page describing the printer's features.



Nozzle Test
Use this test print to check that each print head nozzle is operating properly.

When the BC-21 Color BJ Cartridge is installed, the pattern includes all four colors: yellow, magenta, cyan, and black. In the color pattern, you'll notice that lines are missing between the colors. This is normal.



The following sample shows the Nozzle Test when the BC-20 Black BJ Cartridge is installed.

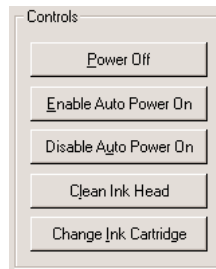


Cleaning the Print Head

Your printer is equipped with a print head cleaning function to ensure constant high quality printing.

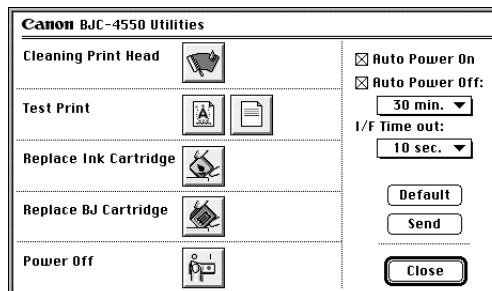
Cleaning the Print Head From Windows

If you are using Windows, you can execute print head cleaning from the Control sheet in the printer driver. Simply click on **Clean Ink Head**.



Cleaning the Print Head From Your Macintosh

From the Utilities dialog box, you can select either Replace Ink Cartridge or Replace BJ Cartridge. Both of these functions move the cartridge holder to the center of the printer where you can change the BJ cartridge or change an ink tank in the BC-21 cartridge.



Cleaning the Print Head Using the Operator Panel

If you want to clean the print head from the operator panel, follow these steps:

1

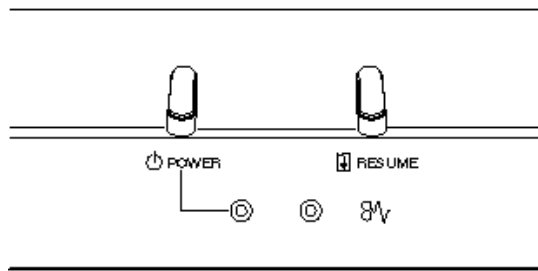
Make sure the printer is turned on.

- Make sure the green POWER light is on.

2

Press and hold the RESUME button for at least two seconds until the printer

- The POWER light will blink for several seconds while the print head is being cleaned.



- Perform the print head cleaning only when you encounter a print quality problem. Unnecessary and repetitious cleaning will waste ink.
- If you execute the print head cleaning while paper is manually loaded, the printer will eject the paper and then perform the cleaning.

BJ Cartridge Guidelines

You can use these BJ cartridges with the printer:

- BC-21 Color BJ Cartridge



Contains the print head unit and two replaceable ink tanks, one color (cyan, magenta, yellow) and one black. You can replace the ink tanks without replacing the print head unit when you run out of ink.

- BC-20 Black BJ Cartridge



Contains the print head unit and black ink only. Use this optional cartridge when you will be printing with black ink only. When you run out of ink, you replace the complete cartridge.

- BC-22 Photo BJ Cartridge (optional)

Contains the print head unit and color and black inks. Use this optional cartridge when you want to produce photo-realistic color printing. When used with Canon's High Resolution Paper (HR-101), this ink produces images comparable to your favorite photographs. When you run out of ink, you replace the complete cartridge.

- BC-29F Neon BJ Cartridge (optional)

Contains the print head unit and neon color and black inks. Use this optional cartridge when you want to add hot new colors to everything from your business graphs to stickers for your kids. These amazing bright fluorescent colors make your pictures, graphs, and fun images really stand out. When you run out of ink, you replace the complete cartridge.

The actual amount of ink that you use will vary depending on the print density of a page. If the majority of your output is graphics, you may need to change cartridges or tanks more often than when you are printing text only. See Appendix A, *Specifications*, for details on the life expectancy of the BJ cartridges.

You may need to replace the BJ cartridge or an ink tank when any of the following conditions exist:

- You have been using the cartridge for over one year.
- Your printed output is not crisp and clear, and there are gaps in the characters (missing dots) even after you have cleaned the print head at least five times.

If you are using the BC-21 Color BJ Cartridge and your output is blank, one of the ink tanks is probably out of ink. See the instructions starting on page 5-18 for replacing an ink tank.



Canon's limited warranty does not cover damage caused to Canon's Bubble Jet products that is attributable to the use of third-party parts or supplies, including inks. The limited warranty remains in effect for its life once that particular damage has been properly repaired.

For optimum printing results, Canon recommends that you use only the Canon BC-21 Color BJ Cartridge, the Canon BC-20 Black BJ Cartridge, or the optional BC-22 Photo or BC-29F Neon BJ Cartridge with your BJC-4550 printer.

When replacing ink tanks in the BC-21 Color BJ Cartridge, Canon recommends that you use only Canon BCI-21 Color and BCI-21 Black Ink Tanks.

BJ Cartridge and Ink Tank Maintenance

The most important thing you can do to extend the life of your BJC-4550 and to ensure optimum print quality is take care of the BJ cartridges.



Caution

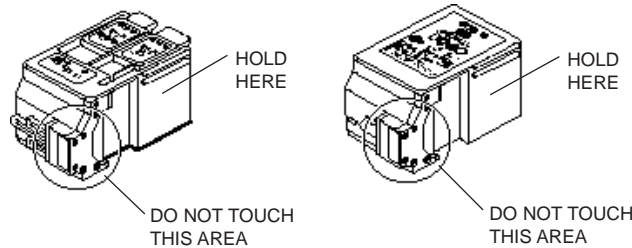
The contents of a BJ cartridge may leak. Spilled ink may permanently stain any surface or object. Open cartridges carefully; follow all instructions on package and use all necessary precautions.

- If you are using more than one BJ cartridge, make sure you store the cartridge not being used in the BJ cartridge container.
- Keep BJ cartridges and ink tanks in their sealed containers until you are ready to use them.
- Do not remove the ink tanks from the BC-21 Color BJ Cartridge unnecessarily. This may cause the ink to clog.
- Make sure both ink tanks are installed in the BC-21 Color BJ Cartridge. Attempting to use the BC-21 Color BJ Cartridge with one ink tank only may cause ink clogging.
- If spilled, the ink is difficult to remove. Therefore, it's a good idea to keep the BJ cartridges and ink tanks out of the reach of children.
- Do not touch the print head area on the BJ cartridge. Ink may leak out and cause stains.



Caution

Hold the BJ cartridge on the sides only. Do not touch the silver plate on the bottom of the BJ cartridge or the silver metal or circuit area on the side. The metal area may become hot during printing.



Replacing the BJ Cartridge

The following procedure describes how to replace the BC-21 Color BJ Cartridge with the BC-20 Black BJ Cartridge. Follow the instructions in this section to replace an old BJ cartridge or to change BJ cartridges when you are switching between the BC-21 and any of the BJ cartridges.

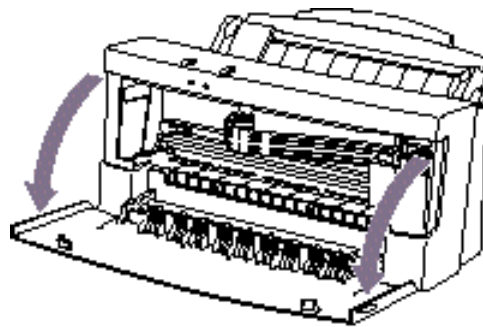
You only need to replace the BC-21 Color BJ Cartridge when the print head is damaged (or after printing approximately 2000 pages). If one of the ink tanks (either color or black) in your BC-21 Color BJ Cartridge is out of ink, see the next section (page 5-18) for instructions on how to replace an ink tank.

Before starting, make sure the printer's power is on.

1

Open the front cover.

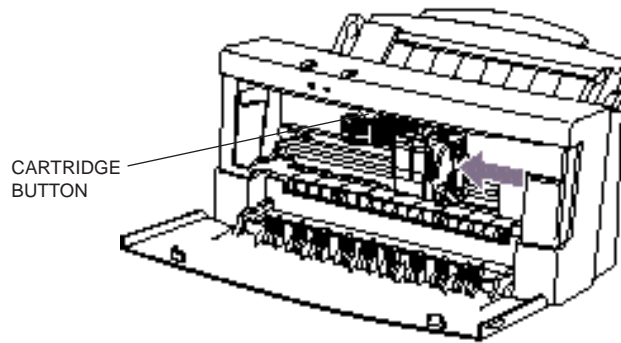
- Use both hands to grasp the sides of the cover and pull it toward you.



2

Press the
CARTRIDGE
button.

- The printer beeps and moves the cartridge holder to the center of the printer.
- The POWER light blinks while the cartridge holder is positioned in the center of the printer.

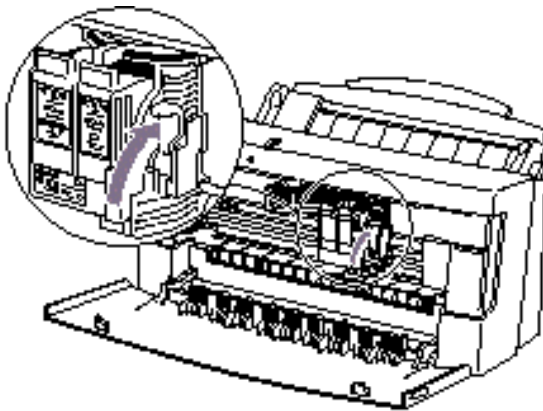


Note

Do not attempt to move the cartridge holder manually. This may damage the printer.

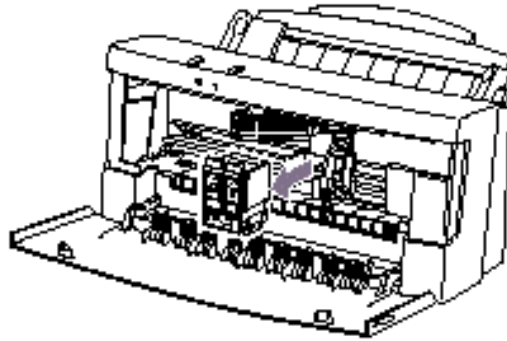
3

Lift the
green lock
lever on the



4

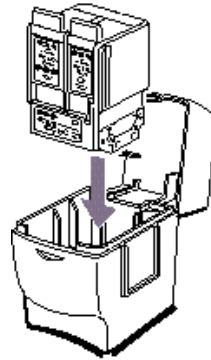
Slide the BJ cartridge out of the holder.



5

Store or dispose of the

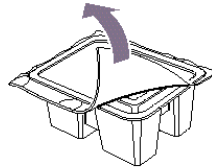
- If you are replacing an old BJ cartridge, dispose of the old cartridge properly.
- If you are switching cartridges, you must store the cartridge you are removing in the BJ Cartridge Container.



6

Take the new BJ cartridge out of its protective packaging.

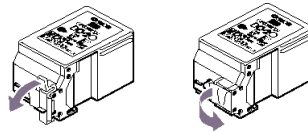
- Peel off the protective foil.



7

Remove the protective material from the BJ cartridge.

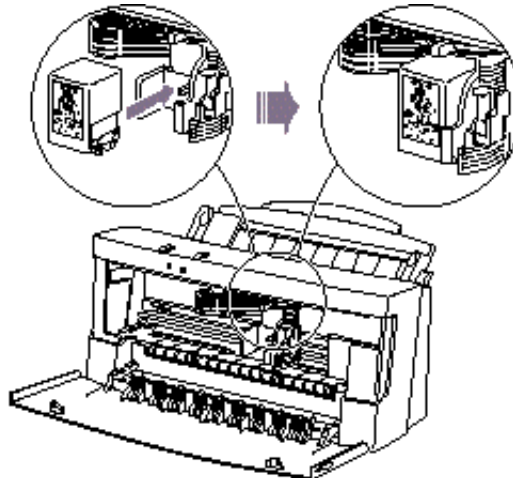
- Lift off the cap from the print head and then remove the tape.



8

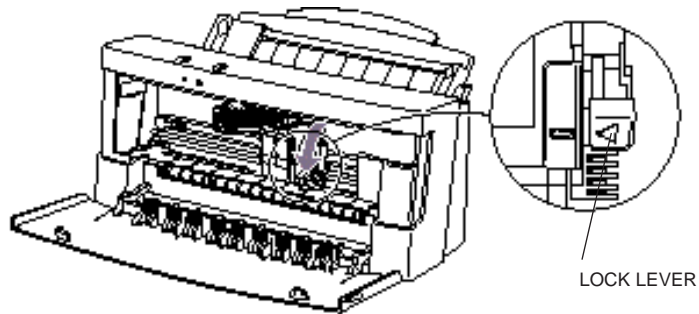
Slide the BJ cartridge straight into the cartridge holder.

- Be careful not to touch the rollers with the print head.
- Make sure the cartridge is pressed against the back of the holder.

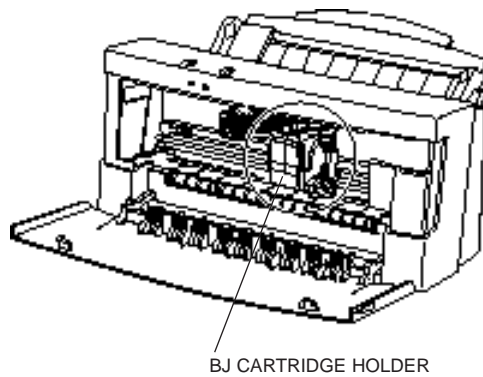


Press the lock lever down completely; do not use

- Make sure the marks on the lever and the cartridge holder align.
- The BJ cartridge is now positioned and locked.

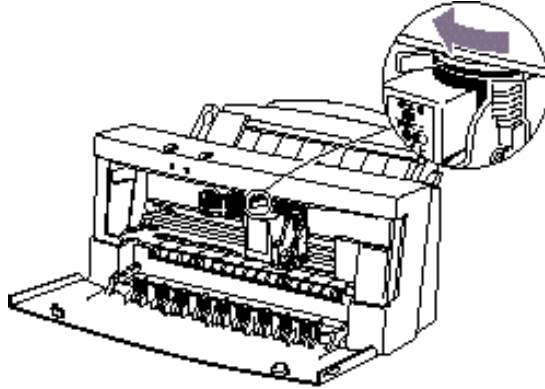


Do not manually move the mechanism that houses the BJ cartridge. Attempting to move the BJ cartridge holder may damage the printer.

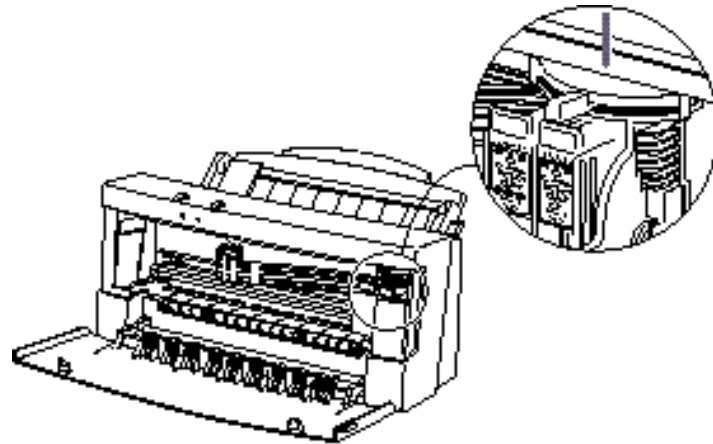


Set the paper thickness lever.

- If you installed the BC-20 Black BJ Cartridge, set the paper thickness lever to the left.



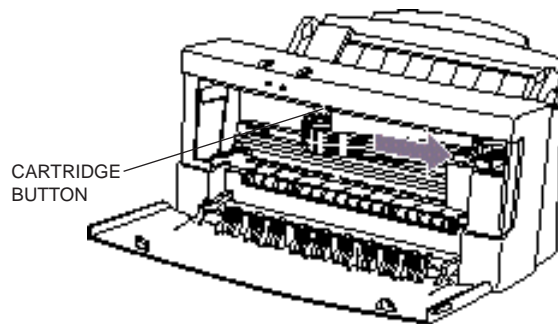
- If you installed the BC-21 Color BJ Cartridge, set the paper thickness lever to the center.



11

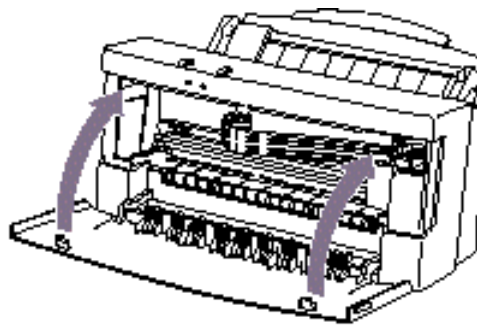
Press the
CARTRIDGE
button.

- The printer beeps and moves the cartridge holder to the home position on the right side of the printer.
- The printer cleans the print head automatically.



12

Close the
front cover.



Caution

Whenever you turn off the printer, the BJ cartridge moves to the *home position* on the right and caps itself. If you unplug the printer while it is printing (or if you turn off a power strip to which the printer is connected), or if you manually move the cartridge holder from the home position, the BJ cartridge will not be capped and it may dry out.

The printer automatically cleans the print head on a new BJ cartridge. See page 5-6 for details on manually cleaning the print head.

Replacing an Ink Tank in the BC-21 Color BJ Cartridge

If you perform a print operation correctly but the output is blank, an ink tank may be out of ink. Perform the print head cleaning at least five times. If the output is still blank, replace the empty ink tank in the BC-21 Color BJ Cartridge.

Leave the BJ cartridge in the printer when replacing an ink tank. Make sure the printer's power is on.

1

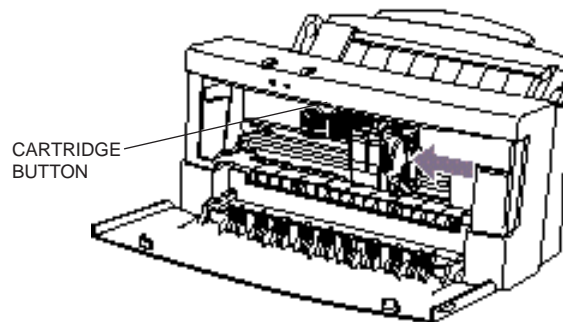
Open the front cover.

- Use both hands to grasp the sides of the cover and pull it forward.

2

Press the CARTRIDGE button once.

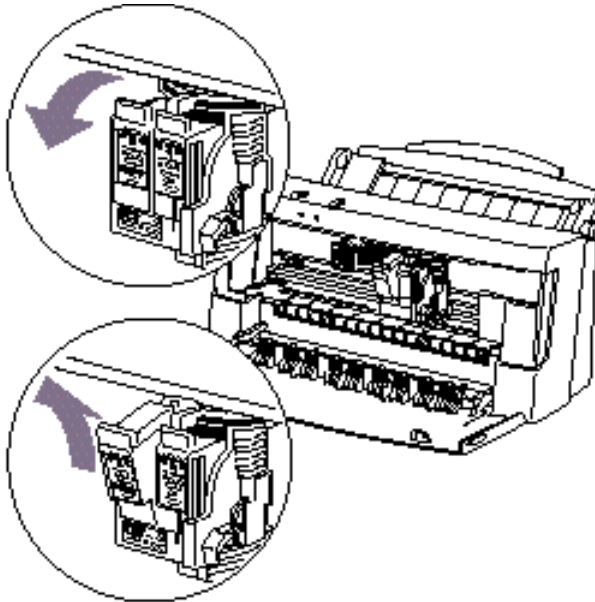
- The printer beeps and moves the cartridge holder to the center of the printer.
- The POWER light blinks while the cartridge holder is positioned to the center of the printer.



3

Remove the empty ink tank.

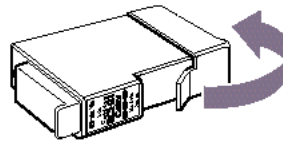
- The color ink tank is on the left; the black ink tank is on the right.
- Grasp the tab on the top of the tank and pull forward to release the ink tank.
- Then lift the ink tank up and out of the BJ cartridge unit.
- Dispose of the ink tank properly. You may want to place it in a plastic bag to keep from spilling any residual ink.



4

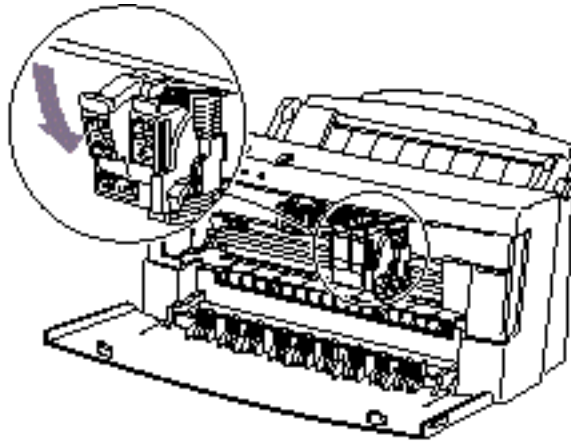
Take the new ink tank out of its packaging.

- Then remove the protective cap.



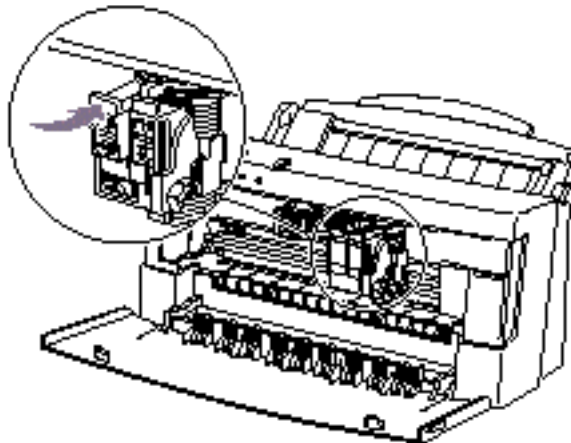
5

Slide the new ink tank into the empty slot on the BJ cartridge.



6

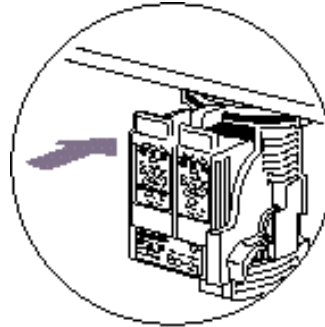
Press firmly on the tab on the top of the ink tank until it snaps into place.



7

Make sure each ink tank is correctly seated in its respective

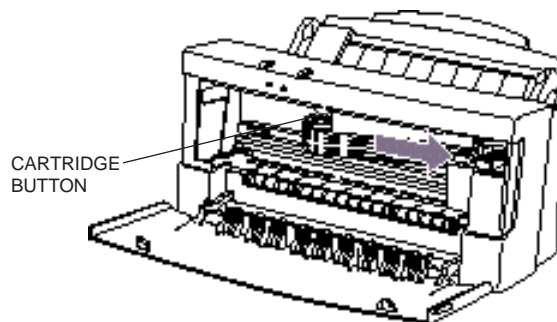
- If you are replacing both tanks, repeat steps 3 through 6 for the other ink tank.



8

Press the CARTRIDGE button.

- The printer beeps and moves the cartridge holder to the home position on the right of the printer.
- The printer automatically cleans the print head unit.



9

Close the printer's front cover.

- Use both hands to lift the cover into place and press firmly to close it.

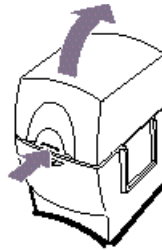
Storing a BJ Cartridge

Whenever you unwrap a BJ cartridge, you must either install it in the printer or store it in the BJ Cartridge Container to prevent the print head from drying and clogging.

1

Open the BJ Cartridge Container.

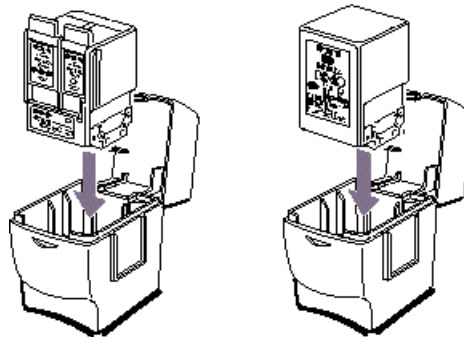
- When opening or closing the BJ Cartridge Container, press in on the container right below the tab that locks the cover in place.



2

Carefully set the cartridge in the container.

- You must insert the cartridge correctly or the container will not close.
- The protective cap must be removed from the cartridge before you set it in the container.



Close the container.

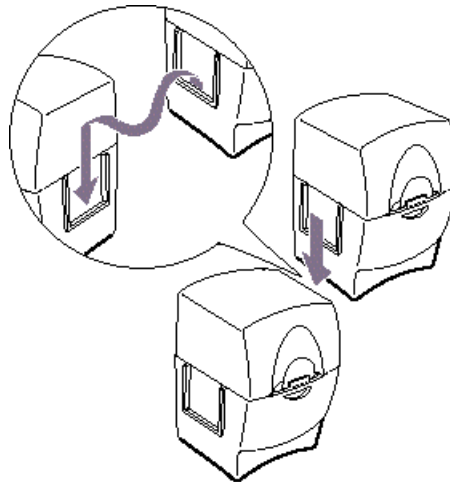
- Be sure the lid snaps closed.



Note

- Whenever you remove a BJ cartridge from the printer, store the cartridge in the container (unless you are disposing of it).

If you have more than one BJ Cartridge Container, you can hook them together. Simply connect the slides and grooves on the sides of the container.



Transporting the Printer



While the BJC-4550 Color Bubble Jet Printer is small and compact, it is not a portable printer and you need to take care when transporting it. The printer's components, such as the sheet feeder, may become damaged if subjected to severe vibration during transportation. Also, your print head may dry out during travel (and become unusable) if it is not capped and taped correctly.

If you plan to move the printer from one location to another, or if you want to store it, follow the steps below.

1

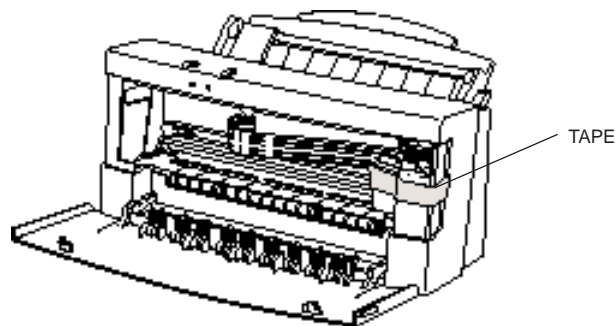
Turn off the printer's power.

- Make sure the print head is in the home position.
- Remove any paper from the sheet feeder.
- Detach the interface cable and the power cord.

2

Open the front cover.

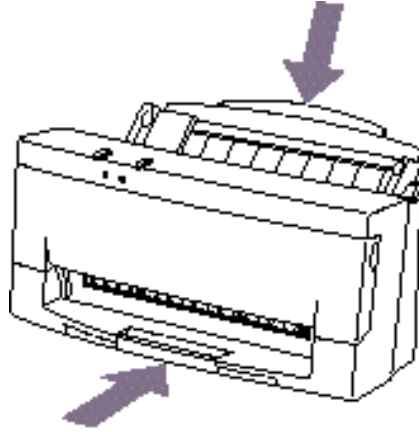
- Tape the BJ cartridge to the side of the printer.



3

Close the front cover.

- Return the paper support and paper output tray to their original positions.



4

Repack the printer in its original packing

- **Do not remove the BJ cartridge from the printer or ship a BJ cartridge or an ink tank from which you have removed the protective cap.** An opened BJ cartridge or ink tank that is not installed in the printer may leak, and the print head may dry out. Also, if you do not tape the BJ cartridge to the side of the printer, ink may spill into the printer.



Due to today's rapidly changing personal computer environment, we have placed troubleshooting information in a variety of places to ensure that the most accurate information possible is available. The best way to find current information is through our on-line and on-screen support services and through our Fax Retrieval System. On-line services include the World Wide Web, our BBS, and CompuServe. On-screen services include the Visual Guide, which includes visual images, and Canon's Super Solver, which includes questions and answers to most problems you may have.

This chapter contains very basic information to help you solve printer problems. It describes how to use Canon's various support services, covers a few basic problems, and describes how to clear a paper jam. For complete problem solving information, be sure to use the Super Solver and our other support services.

Using Canon's Support Services

This section describes where to look for help. For information on the numbers for these services, see *Getting Help From Canon* in Chapter 1 (page 1-4).

- If you have an operational problem:
 - Try to solve it using the Super Solver.
 - Look through the Visual Guide for related information.
- If you have a need for a unique printer driver:
 - Contact Canon through the Web, its BBS, or CompuServe.
- If you are an MS-DOS user (and do not have Windows):
 - Use Canon's Fax Retrieval system to obtain information regarding how to use the printer with your MS-DOS applications.

- If you have a hardware problem:
 - Call the Customer Care Center.
- If you do not have a CD drive:
 - Call the Customer Care Center to order Canon's Super Solver and Color Advisor on diskette.

Identifying Your Printer Problem

Before contacting Canon, identify your printer problem and make sure you have the following information:

- Product name—BJC-4550
- Serial number
- Place of purchase
- Nature of problem
- Steps you have taken to solve the problem and the results

The serial number is located on the label on the back of the printer:

```
CANON INC (DAI)           R35-9698  
MADE IN JAPAN  
-----  
NO. XXXXXXXXX SERIAL  
NUMBER
```



Note

Attempting to repair the printer yourself may void the limited warranty as to that repair. See the limited warranty information that came with your printer for details.

General Problems

The most basic problems you may encounter are “the printer does not print” and “your print quality is not satisfactory.”

- If the printer does not print
 - Check all your cable connections
 - Check your printer driver setup
 - Check your computer configuration
- If your print quality is not satisfactory
 - Clean the print head
 - Clean the print head five times
 - Replace the BJ cartridge

Using the Super Solver (Windows Only)

Canon's Super Solver is included with Canon Creative. The Super Solver is an on-line troubleshooting guide. It includes questions and answers to most problems you may have.

You install the Super Solver from the Canon Creative CD. You can install it along with the Visual Guide or separately from the Canon Creative Launcher.

Once installed, you can select the Super Solver from the Visual Guide tab in the BJC-4550 Printer Driver or from Canon Creative.

Clearing Paper Jams

When a paper jam occurs, the power light turns orange and the printer goes off-line.

1

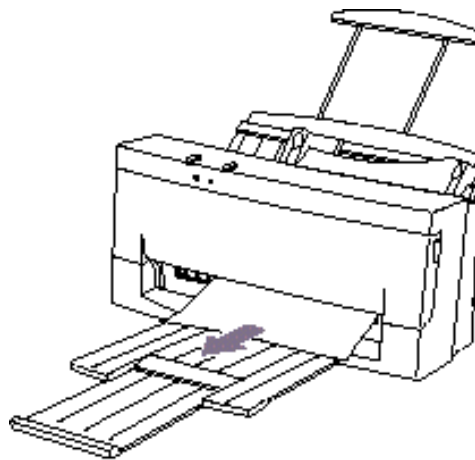
Press the
POWER

- Turn off the printer.

2

Gently pull
the paper out
with one
hand while
holding down
the printer

- If the paper tears off inside the printer, open the front cover and remove the paper left inside the printer.



3

Press the
POWER
button to
turn the

- The power light comes on and the print head moves to the home position.
- The printer is now ready for printing.



Note

If you are printing high density graphics when a paper jam occurs, feed at least two sheets of paper through the printer to clean the rollers.

Technical Notes

This section describes problems that occur with specific computer configurations. Our on-line services are updated with this type of information as it becomes available. If you are having a unique problem and do not see your computer here, be sure to use our on-line services (Web, BBS, CompuServe). See *Getting Help From Canon* in Chapter 1 (page 1-4) for details.

Compaq Presario 7170/7180

Problem

A [k prints at the top of the page when printing from Windows 95 on a Compaq Presario 7170/7180.

Cause

Configuration of parallel port in CMOS.

Solution

Change CMOS on Compaq Presario 7170/7180 to enable bi-directional capability:

- m Reboot computer, press “Delete” to go into CMOS setup
- m At Setup menu, cursor to “Advanced System Setup” and “Enter” to select
- m From Advanced System Setup menu, select “Integrated Peripherals”
- m From Integrated Peripherals Menu, cursor to “LPT Extended Mode” (Note: This is different than the LPT1 mode)
- m The LPT Extended Mode will probably show “Standard”—Use the “Page Down” key to cycle to “ECP Mode”
- m Press “ESC” key to go back to Advanced System Setup Menu
- m Press “ESC” key to go back to main setup menu
- m Press “F10” to save new configuration, and confirm save by answering “Yes” to final question

Toshiba Laptop

Problem

A [K prints at the top of the page and/or partial printout when printing on a Toshiba laptop.

Cause

Configuration of parallel port in CMOS and LPT.VXD file.

Case #1 Partial printout may occur with the following settings:

CMOS value for LPT1 is ECP LPT.VXD v4.00.950 file size 35,479

Case #2 [K is printed at top and the rest of the page is correct with the following settings:

CMOS value for LPT1 is Standard Bi-directional LPT.VXD v4.00.950 file size 35,479

Solution

This corrected configuration should provide correct output. CMOS value for LPT1 is Standard Bi-directional LPT.VXD v4.00.503 file size 35,487.

The LPT.VXD file is located in the Windows/System directory. The LPT.VXD file will be available on the BBS and CompuServe Filename: LPT.EXE located in the Windows 95 section.

To change the CMOS settings:

- m From Windows 95, click on Start
- m Go to Programs
- m Select Toshiba Utilities

You will have either the TSETUP or HARDWARE SETUP UTILITY.

For TSETUP Select Hardware Options:

- m Select Parallel/Printer
- m Select Standard bi-directional
- m Click OK
- m The computer will ask if you want to reboot—Select Yes

On both utilities you will have to save and reboot the system.

Note that selecting standard Bi-directional changes the CMOS setting to bi-directional.

Compaq Presario

Problem

A Compaq Presario running Windows 95 will print only 3/4 page out of any windows application.

Cause

This occurs with the Windows 95, Windows 3.1, and Win95 mini drivers.

Solution

Change the Resource Setting of LPT1.

- m Right Click on My computer
- m Select Properties
- m Select Device Manager Tab
- m Double-click Ports (COM & LPT)
- m Double-click LPT-1
- m Select Resources Tab
- m De-select Automatic Settings
- m Change Basic config from 0000 (0) to 0003 (3)
 - This step may require setting to 0002 (2) first, and then reboot in order to see 0003 (3)
- m Select OK

The above solution has found to be successful on some machines. If unsuccessful, then try the following procedure forwarded from Compaq Tech Support.

- m Go To Control panel
- m System
- m Device Manager

- m Click “+” in Front of Port
- m Highlight ECP Printer Port
- m Properties
- m Resources
- m Disable “Use Automatic Settings”
- m Double-click on Direct Memory Access Line
- m Change Volume Line to 3
- m Click OK
- m Close
- m Reboot

Specifications **A**



Printing Specifications

Printing Method
Bubble jet ink on-demand

Paper Handling
Automatic feed
Manual feed

Sheet Feeder Capacity
Maximum thickness of stacked paper: 0.4 inches (10 mm)
Plain paper
 (20 lb or 75 g/m²) Approx. 100 sheets (0.4" stack)
Bubble Jet paper Approx. 100 sheets (0.4" stack)
High resolution paper Approx. 80 sheets (0.4" stack)
Transparencies 50 sheets
Back print film 10 sheets
High gloss film 1 sheet
Fabric sheets 1 sheet
T-shirt transfers 1 sheet
Greeting cards 1 sheet
Brochure paper 1 sheet
Envelopes 15 envelopes (U.S. Commercial number
 10 or European DL)

Paper Size
Letter 8.5 in × 11 in
Ledger/Tabloid 11 in × 17 in
Legal 8.5 in × 14 in
A3 297 × 420 mm
A4 210 mm × 297 mm
A5 148 × 210 mm
B5 182 × 257 mm
U.S. Commercial number
 10 envelope 9.5 in × 4.1 in
European DL envelope 220 mm × 110 mm



Recommended Paper Type

Bubble Jet paper	Canon Bubble Jet Paper (water-resistant) LC-301
High resolution paper	Canon High Resolution Paper HR-101
Transparencies	Canon Transparency CF-102
Back print film	Canon Back Print Film BF-102
High gloss film	Canon High Gloss Film HG-101
Fabric sheets	Fabric Sheet FS-101 for Canon Bubble Jet printers
T-shirt transfers	Canon T-Shirt Transfers TR-101
Greeting cards	Canon Greeting Cards GC-101
Brochure paper	Canon Brochure Paper BP-101
Envelopes	U.S. Commercial number 10 or European DL

Paper Weight

Automatic feed	17 to 24 lb (64 to 90 g/m ²)
Manual feed	17 to 30 lb (64 to 105 g/m ²)

Print Speed

BC-21 Color BJ Cartridge; black ink	Standard mode—180 cps at 10 cpi Draft mode—255 cps at 10 cpi
BC-21 Color BJ Cartridge; color ink	Approximately 0.3 to 0.8 ppm at full coverage of printable area (print speed depends on content of print data)
BC-20 Black BJ Cartridge; black ink only	Standard mode—360 cps at 10 cpi Draft mode—510 cps at 10 cpi

Print Width

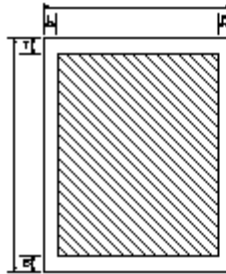
Maximum	11.4 inches (289 mm)
---------	----------------------

Line Feed Speed

Approximately 150 ms/line at 2/6-inch line feeds

Printable Area—Papers

The shaded portion in the following figure shows the printing area for papers.



- Print Media (other than Fabric Sheets)

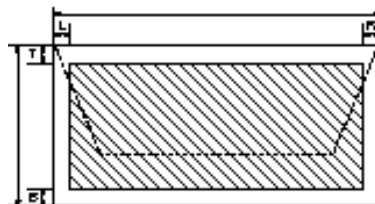
Margins	Inches	m m
Left	0.13	3.4
Right	0.13	3.4
Top	0.12	3.0
Bottom	0.27	7.0

- Fabric Sheets

Margins	Inches	m m
Left	0.13	3.4
Right	1.35	34.4
Top	1.62	41.1

Printable Area—Envelopes

The shaded portion in the following figure shows the printing area for an envelope.



Margins	Inches	m m
Left	0.13	3.4
Right	0.13	3.4
Top	0.12	3.0

BJ Cartridges

BC-21 Color BJ Cartridge

Print head	64 nozzles for black 24 nozzles for each color (cyan, magenta, yellow)
Print head life	Approximately 2,000 color pages at 30% coverage
Ink tanks	BCI-21 Color (cyan, yellow, magenta) BCI-21 Black
Ink color	Black, cyan, yellow, magenta
Ink tank yield	
BCI-21 Color	Standard mode—100 pages Draft mode—200 pages (at 7.5% coverage for each color)
BCI-21 Black	Standard mode—150 pages Draft mode—300 pages (at 7.5% coverage)

BC-20 Black BJ Cartridge

Print head	128 nozzles
Ink color	Black
Cartridge life/ Ink tank yield	900 text pages at 5% coverage

BC-22 Photo BJ Cartridge (optional)

Cartridge life	60 pages
----------------	----------

BC-29F Neon BJ Cartridge (optional)

Cartridge life	130 pages
----------------	-----------

General

Interface

IEEE 1284 compatible parallel interface
Apple-style RS-422 compatible serial interface

Acoustic Noise Level

Approx. 45 dB(A) Per ISO 9296

Operating Environment

Temperature 41° F to 95° F (5° C to 35° C)
Humidity 10% to 90% RH (no condensation)

Storing Environment

Temperature 32° F to 95° F (0° C to 35° C)
Humidity 5% to 95% RH (no condensation)

Power Source

USA/Canada AC 120 V60 Hz

Power Consumption

4 watts maximum nonprinting
34 watts maximum printing

Dimensions

17.6 in (447 mm) W × 10.0 in (253 mm) D × 8.5 in (216 mm) H

Weight

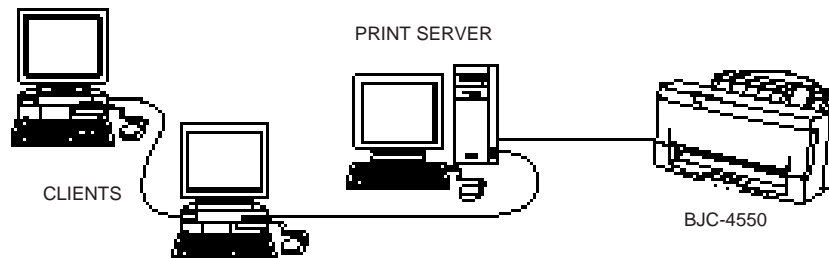
Approx. 9.5 lb (4.3 kg)

Sharing Your Printer

B



If your Macintosh is connected to an AppleTalk network, you can share your BJC-4550 printer with the other Macintosh users. The Macintosh to which the printer is connected is called the print server while the Macintosh computers that are connected to the print server through the network (LocalTalk® or EtherTalk) are referred to as clients.



If you decide to designate your Macintosh as a print server, there are certain parameters and procedures you must keep in mind so that your BJC-4550 prints properly.

- Before you decide to share your printer, make sure that the printer is working properly as a stand-alone printer connected directly to your Macintosh. You can check this by installing the printer driver for local printing and then making test prints.
- Make sure that the clients who want to use your printer are using the same QuickDraw system (either QuickDraw or QuickDraw GX) as the print server. Also, the fonts that a client wants to use for printing must be in the system of the print server.
- To allow other users to use your printer over a network, you must set up your Macintosh computer as a print server while the other users must set up their Macintosh computers as clients by installing the appropriate server or client printer drivers and any other related software. Also, make sure that the BJ StatusMonitor, which allows QuickDraw users to check and change the status of print jobs, is installed. The BJ StatusMonitor is for use with QuickDraw only and not QuickDraw GX (QuickDraw GX already has its own print monitor software built in).

Sharing Printer—
AppleTalk Network

Sharing the Printer When Using QuickDraw

This section explains how to set up the print server and clients to use the BJC-4550 on a network when using QuickDraw as well as how to check and change the printing status.

Setting Up The Print Server and the Client

In order to share the BJC-4550, you must first set up a Macintosh that is directly connected to the printer as a print server. You can then set up one or more Macintosh computers as clients which are on the same network as the print server.

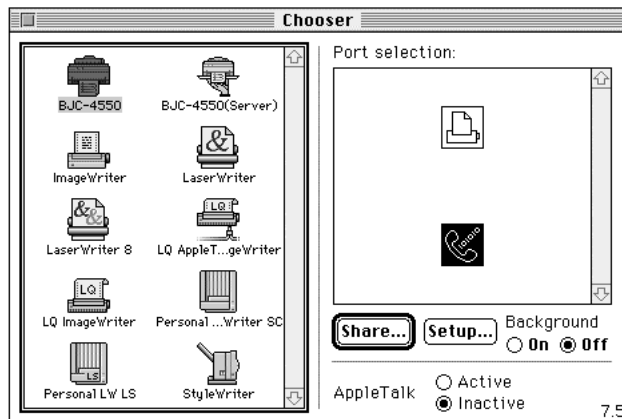
Setting Up the Print Server

First, install the printer driver on the Macintosh that is to be the print server. See your *Quick Start Guide* for details.

1

Choose
Chooser from
the

- The Chooser is displayed.



2

Set
AppleTalk

- Select the BJC-4550 icon from the list of printer drivers in the upper-left area of the Chooser. You may need to scroll down to see the driver.
- If any AppleTalk zones exist, select the zone in the lower-left area of the Chooser in which you want to set up the printer.
- Select the port to which the printer is connected from the list of ports displayed in the upper-right area of the Chooser.
- Make sure Background is On to enable background printing.



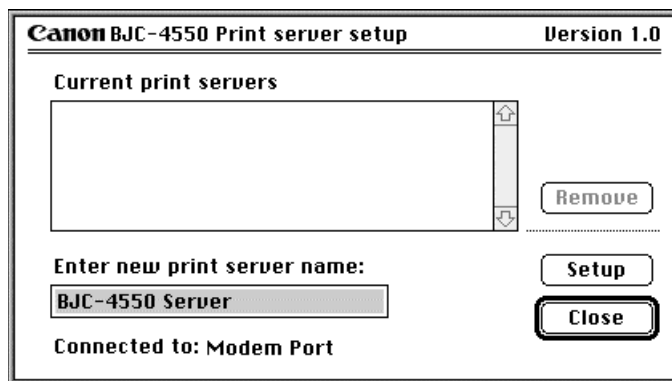
Note

For best results when using a Macintosh as a print server, make sure you turn background printing on. Otherwise, performance may decrease.

3

Click the
Shared

- The Print Server Setup dialog box appears.



- Enter a name for the new print server if necessary, and then click the Setup button.
- Verify that the print server name is added to the list box of current print servers.
- Click the Close button to return to the Chooser.

4

Close the Chooser.

- You can now share your printer with others on the network that are using QuickDraw.

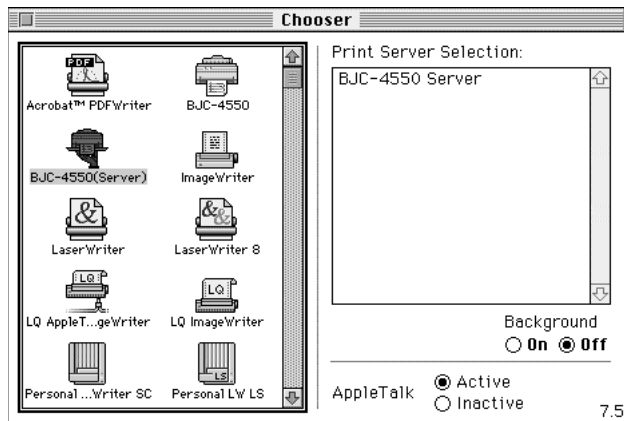
Setting Up the Client

First, install the printer driver on the Macintosh you want to be a client. See your *Quick Start Guide* for details.

1

Choose Chooser from the

- The Chooser is displayed.



2

Set
AppleTalk

- Select the BJC-4550 (Server) icon from the list of printer drivers in the upper-left area of the Chooser. You may need to scroll down to see the driver.
- If any AppleTalk zones exist, select the zone in the lower-left box of the Chooser in which the printer is setup.
- Select the print server name in the upper-right area of the Chooser.
- Click Background On if you want to use background printing.

3

Close the
Chooser.

- You can now print your documents from the client to the BJC-4550 that is being shared on the same AppleTalk network.

Checking and Changing the Status of Print Jobs

The application used when checking and changing the status of print jobs differs depending on if you are using the print server or a client.

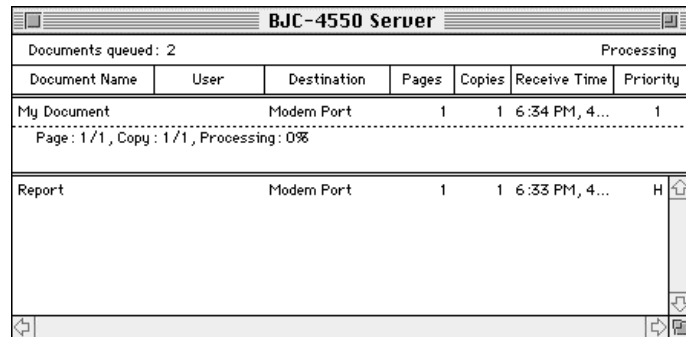
From the Print Server

When you are printing directly from the print server or when a client is using the print server to print, you can check and change the status of the print jobs from the print server by using the BJ PrintMonitor.

When Background printing is on, the BJ PrintMonitor starts whenever you print a document.

From the Client

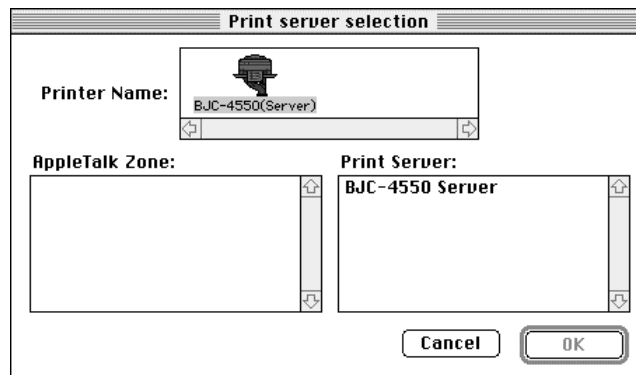
To check the print status from a client, you use the BJ StatusMonitor, which was placed in a folder called BJ Extras during printer driver installation. To start it, double-click the BJ StatusMonitor icon. The BJ StatusMonitor is displayed.



File menu

The File menu includes these commands:

- Print server selection
Opens the Print Server Selection dialog box similar to this:



You can choose the print server for the client in this dialog box. First select the zone in the lower-left box of the Chooser in which the printer is setup if any AppleTalk zones exist. Then in the Print Server box, choose the name of the printer server that corresponds to the printer you want to use.

Queue menu

With this menu, you can specify when you want each document to print. To perform a Queue command on a particular print job, first select the print job and then select the command. The Queue menu includes these commands:

- Get Info
Displays information about the selected print jobs in the queue.
- Hold
Puts the selected print jobs on hold and marks them with an H.
- Retry
Releases a hold condition, or restarts a print job that has been paused and marked with an E due to an error.
- Delete
Removes the selected print job from the print queue. If the print job is currently being printed, printing of that job is stopped and the job is deleted from the queue.



Sharing the Printer When Using QuickDraw GX

This section explains how to set up the print server and clients to use the BJC-4550 on a network when using QuickDraw GX as well as how to check and change the print status.

Setting Up the Print Server and the Client

In order to share the BJC-4550, you must first set up a Macintosh that is directly connected to the printer as a print server. You can then set up one or more Macintosh computers as clients which are on the same network as the print server.

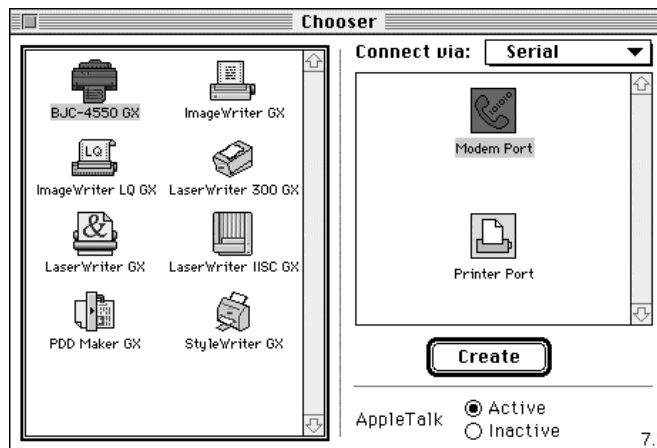
Setting Up the Print Server

First install the printer driver on the Macintosh that is to be the print server. See your *Quick Start Guide* for details.

1

Choose
Chooser from
the

- The Chooser is displayed:



2

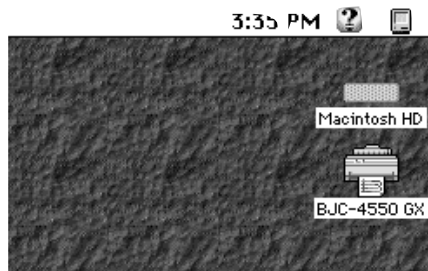
Set
AppleTalk

- Select the BJC-4550 GX icon from the list of printer drivers in the upper-left area of the Chooser. You may need to scroll down to see the driver.
- Select Serial from the pop-up menu next to Connect to:.
- Select the port to which the printer is connected from the list of ports displayed in the upper-right area of the Chooser.

3

Click the
Create button
to register
the BJC-
4550 GX
as a desktop

- The desktop printer icon for your printer appears at the upper-right of the desktop.



Sharing Printer—
AppleTalk Network

4

Close the
Chooser.

- Click the BJC-4550 GX printer icon on your desktop.
- Choose Sharing from the File menu.
- Check the box next to Share this printer. Your printer is now ready to be shared with others on the network that are using QuickDraw GX.



Note

For more information about the items in the Printer Sharing dialog box, choose Show Balloons from the Guide menu.

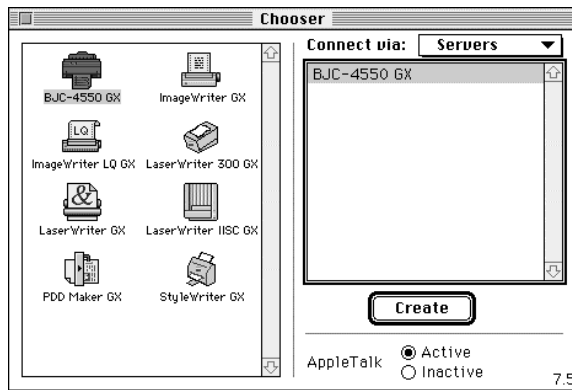
Setting Up the Client

First, install the printer driver on the Macintosh you want to make as a client. See your *Quick Start Guide* for details.

1

Choose
Chooser from
the

- The Chooser is displayed.



2

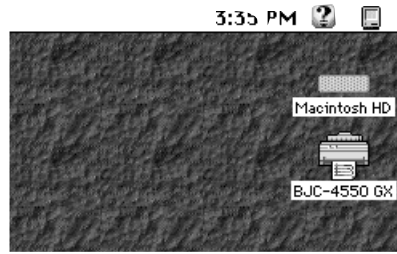
Set
AppleTalk

- Select the BJC-4550 GX icon from the list of printer drivers in the upper-left area of the Chooser. You may need to scroll down to see the driver.
- If any AppleTalk zones exist, select the zone in the lower-left area of the Chooser in which you wish to setup the printer.
- Select Server from the pop-up menu next to Connect to:.
- Select BJC-4550 GX from the list of shared desktop print servers.

3

Click the Create button to register the BJC-4550 GX as a desktop

- The desktop printer icon for your printer appears at the upper right of the desktop.



4

Close the Chooser.

- You can now print your documents from the client to the BJC-4550 that is being shared on the same AppleTalk network.

Checking and Changing the Status of Print Jobs

QuickDraw GX has its own print monitor software built in and therefore no separate applications are needed to check print status. For details on how to check and change the status of print jobs on a network when using QuickDraw GX, please see your QuickDraw GX documentation.

Glossary G



A

Automatic feed

Refers to one way in which paper can be fed into the printer when the sheet feeder is used.

B

BJ cartridge

The printing mechanism that contains the print head unit and ink tanks.

BJ Cartridge Container

A box for storing a BJ cartridge. A BJ cartridge removed from the printer must be stored inside this BJ cartridge container to prevent the print head of the cartridge from drying and clogging.

Bubble Jet printer

An ink-jet type printer that heats the ink to a boiling point in a nozzle to form a bubble. When the bubble expands, there is no room left in the nozzle for the ink and the ink is projected onto paper.

C

CMYK

Acronym for cyan, magenta, yellow, and black; the four colors used in the standard color model of the printing industry. Refers to a method of specifying color using CMYK color values. (K is used for black because B is used to represent blue in RGB.)

Composite black

The black color formed by mixing cyan, magenta, and yellow ink so that they appear almost black on a printout.

cpi

Characters per inch. A unit of measurement relevant to a fixed-space font. Because all characters have the same width, you can calculate the number of characters printed per inch.

cpl

Characters per line. A unit of measurement that indicates the number of characters printed per line.

cps

Characters per second. A unit of measurement that indicates the printer's speed.

D

dB (A)

Stands for decibel level (a decibel being a unit of measurement for the intensity of the sound coming from the printer), adjusted for background noise.

dpi

Dots per inch. A unit of measurement for indicating a printer's resolution. Your printer can produce a resolution up to 720 dpi (horizontal) depending on the printer control mode and the application you are using.

F

Font

A complete set of characters of the same size and style; a particular implementation of a typeface. For example, 12-point, Courier bold.

Form feed

A printer function that automatically ejects the current page and advances the printer to the top of the next page.

G

Grayscale

Representing color in black and white as a result of different intensities of color. Different colors and intensities of colors appear as different shades of gray.

H

Halftone

Using this method, the printer produces shades of gray or of colors by mapping dots to be printed. For color printing, different colored dots of ink are placed closely together to create illusions of other colors.

Hue

A color in the color spectrum. Examples are red, green, and violet.

I

Ink tank

The special type of ink container housed by the BJ cartridge. The BC-21 Color BJ cartridge contains two ink tanks: one color (which includes cyan, yellow, magenta) and one black.

Intensity

The amount of color. More intense or more saturated colors are more pure. Less intense or less saturated colors are less vivid.

Interface

The connection between two devices that makes it possible for them to communicate with each other. This printer features a parallel interface, which makes it compatible with IBM® and similar personal computers.

L

Landscape orientation

Refers to printing across the length of the page (as opposed to portrait orientation printing across the width of the page). The term landscape is derived from pictures of the landscape, which are usually horizontal in format.

lpi

Lines per inch. The measurement used in describing the number of lines that will print within one vertical inch. Most printing is done in 6 or 8 lpi.

M

Manual feed

A method of feeding paper to the printer one sheet at a time.

N

Noise level

See dB(A).

P

Page orientation

Refers to the direction of print on the page. Printing across the width of a page is called portrait orientation. Printing across the length of a page is called landscape orientation.

Paper thickness lever

The green lever located inside the printer, which you adjust as necessary to accommodate different BJ Cartridges, paper thicknesses, and graphics densities.

Parallel interface

An interface that transmits multiple bits simultaneously (usually in one-byte segments). Your printer has a built-in, Centronics-type parallel interface with bi-directional capability. *See also* Interface.

Pitch

Refers to the number of characters per inch that can be composed using a fixed space font.

Platen

Printer component that holds the paper in position during ink transfer.

Point size

Character height is defined in points; one point is 1/72 inch. For instance, this text is printed using a 10-point font.

Portrait orientation

Refers to printing across the width of the page (letter style). This is the opposite of landscape orientation, which is printing across the length of the page.

Print head

The printing mechanism that contains print nozzles and ejects the ink for printing.

Print head capping

An automatic protection function that prevents the print head unit and ink cartridges from drying out or becoming clogged with dust.

Printable area

The area of a sheet of paper on which a printer can reproduce text or graphics (the printing area is smaller than the paper). On this printer, the printing area varies depending on the type of paper being used.

Printer driver

Software that sends printing instructions to a printer. The printer driver keeps track of the attributes of a printer and the codes the program must send to access those attributes.

R

RAM

Random Access Memory. Printer memory that is used for temporary storage of information you want to print and downloaded fonts.

Resolution

The density of dots for any given output device. Expressed in terms of dots per inch (dpi). Low resolution causes font characters and graphics to have a jagged appearance. Higher resolution means smoother curves and angles as well as a better match to traditional typeface designs. Resolution values are represented by horizontal data and vertical data, for example, 360×360 dpi. This printer can produce output with resolutions up to 720×360 dpi precision.

RGB

An acronym for Red, Green, and Blue; the three primary colors used in the additive process to form a wide spectrum of colors.

T

True black

Contrary to composite black, true black color on a printout is obtained with the use of black ink.

TrueType font

The scalable font technology built into Microsoft Windows 3.1. It offers you the same font images both on computer displays and printer outputs.

A

Accessories: 1-2-3
 Acoustic noise level: A-5
 Apple, interface: A-5
 AppleTalk network: B-1-11
 Auto feed guidelines: 4-13-15
 Auto power: 2-7
 Automatically feeding paper: 4-9-15

B

Back Print Film BF-102: 1-3, 4-3, 4-8, A-1-2
 BC-20 Black BJ Cartridge: 1-2, 4-5, 4-8-9, 5-5, 5-8-11, 5-16, A-2, A-4
 BC-21 Color BJ Cartridge: 1-2, 4-5, 4-8-9, 5-5, 5-8-11, 5-16, 5-18, A-2, A-4
 BC-22 Photo BJ Cartridge: 1-2-3, 4-3, 5-8-9
 Photo Kit: 1-3
 BC-29F Neon BJ Cartridge: 1-2, 5-8-9
 BCI-21 ink tanks: 1-2, 5-9-10, 5-18-21
 BJ cartridge(s): 1-2, 4-5, 5-2, 6-3
 change: 2-7
 guidelines: 5-8-10
 holder: 5-12, 5-15
 maintenance: 5-10
 paper thickness lever: 4-5
 replacing: 5-11-17
 specifications: A-4
 storing: 5-22-23
 BJ Cartridge Container: 1-2-3, 5-13, 5-22-23
 BJ Printer Driver: 2-1
 installing: *See Quick Start Guide*
 BJ Standard Monitor profile: 3-13-14
 Brochure Paper BP-101: 1-3, 4-4, 4-8, A-2
 Bubble Jet Paper LC-301: 1-3, 4-2, 4-8
 Bulletin board service (BBS): 1-4, 6-1

C

Canon
 accessories: 1-2-3
 Canada: 1-5
 Creative: 6-3
 Customer Care Center: 1-5, 6-2
 Fax Retrieval System: 1-5, 6-1
 help: 1-4-6, 6-1-2
 Referral Service: 1-2
 specialty papers: 1-3, 4-2-4, 4-8, 4-22-26
 Super Solver: 1-4-5, 6-1, 6-3
 supplies: 1-2-3
 support services: 1-4-6, 6-1-2
 Visual Guide: 1-4, 6-1, 6-3
 warranty: 1-6, 6-2, W-1-2
CARTRIDGE button: 5-12, 5-17-18, 5-21
 Cartridge detection: 2-7, 2-11
 CD drive: 6-2
 Change, BJ cartridge: 2-7, 3-7
 Cleaning
 print head: 2-7, 3-7, 5-6-7, 6-3
 printer: 5-3
 Cleaning sheet, High Resolution
 Paper: 4-22-23
 Clearing, paper jams: 6-4
 Client, Macintosh: B-1-11
 Color Advisor: 2-7, 2-11
 Color model: 2-6, 2-9
 ColorSync: 3-13-14
 COM 10 envelopes: 4-18, A-1-2, A-3
 Compaq Presairo: 6-6-7
 CompuServe: 1-4, 6-1
 Control tab: 2-7
 Custom print settings: 2-7
 Customer Care Center: 1-5, 6-2

D

Demonstration, test page: 5-5
Details tab: 2-5
Diffusion halftones: 2-13
Dimensions, printer: A-5
DL envelopes: 4-18, A-1-3
Document, printing: 2-2
Driver settings: 2-9

E

Envelopes

DL size: 4-8, A-1-3
printable area: A-3
printing: 4-18-21
US COM 10: 4-18, A-1-3

F

Fabric Sheet FS-101: 1-3, 4-3, 4-8, 4-24-26
Fax Retrieval System: 1-5, 6-1
FCC Regulations: FCC-1
Feeding paper
 automatically: 4-9-15
 manually: 4-15-18
Fine mode: 2-6

G

General tab, Windows 95: 2-5
Getting help: 1-4-6, 6-1-2
Glossary: G-1-6
Graphics
 settings, recommended: 2-9
 tab: 2-6
Greeting Cards GC-101: 1-3, 4-3, 4-8, A-2
Guidelines
 auto feed: 4-13-15
 BJ cartridge: 5-8-10
 paper: 4-4
 printer: 5-2

H

Hardware problem: 6-2
Heavier-weight print media: 4-5-6, 4-8,
 4-15
High Gloss Film HG-101: 1-3, 4-3, 4-8, A-2
High quality color printing: 2-9, 2-12
High Resolution Paper HR-101: 1-3, 4-3,
 4-8, 4-22-23, A-2
Home position, BJ cartridge: 5-2, 5-17

I

Identifying, printer problem: 6-2
Image color matching: 2-6
Improving, print speed: 2-13-14
Ink tanks: 1-2, 5-9
 maintenance: 5-10
 replacing: 5-18-21
Installing, printer driver: 2-1
 See Quick Start Guide
InstantExchange warranty
 program: 1-6
Interface: A-5
Internet: 1-4, 6-1

L

Line feed speed: A-2
Loading paper: 4-5-17
Lock lever: 5-12, 5-15

M

Macintosh: 3-1-14, B-1-11
 AppleTalk network: B-1-11
 applications: 3-1
 operating system: 3-1
 Photoshop: 3-8-13
 printer driver: 3-1-14
 QuickDraw: 3-2-4, B-1-7
 QuickDraw GX: 3-5-6, B-1, B-8-11
 settings: 3-2-6
 Utilities: 3-7

Maintaining
 BJ cartridges and ink tanks: 5-10
 printer: 5-1-25
Manually feeding paper: 4-15-17
Memory: 2-14
Monochrome printing: 2-9, 2-12, 2-14
MS-DOS users: 6-1

N

Nozzle test: 5-5

O

On-line
 help: 2-8
 support services: 1-4, 6-1
On-screen support services: 1-4, 6-1
Operating environment: A-5
Optimum printing: 5-9-10

P

Page orientation: 2-6
Paper
 guidelines: 4-4
 handling: 4-1-26, A-1
 printable area: A-3
 size: 2-6, A-1
 weight: A-2
Paper feed
 limit: 4-8
 method: 4-8
Paper jams, clearing: 6-4
Paper output tray: 4-12-13, 4-16,
 4-21-22, 4-24
Paper support: 4-7-8, 4-10, 4-16, 4-19,
 4-22, 4-24
Paper tab: 2-6
Paper thickness lever: 4-5, 4-8-9, 4-15,
 4-18, 5-16
Paper types: 2-6, A-2
 selecting: 4-2-4
Permanent swap file: 2-13
Plain paper: 4-2, 4-8
Platen, cleaning: 5-3
Plug-In, Photoshop: 3-8-13

Power

 consumption: A-5
 off: 2-7
 source: A-5
Primary colors: 2-14
Print head, cleaning: 5-6-7
 Macintosh: 5-6
 operator panel: 5-7
 Windows: 5-6
Print job, status: B-1, B-5-7, B-11
Print Manager: 2-13
Print media, printer settings: 4-8
Print model: 2-6
Print quality: 2-6, 2-9
 not satisfactory: 6-3
Print server, Macintosh: B-1-11
Print speed: A-2
 improving: 2-13-14
Print width: A-2
Printable area
 envelopes: A-3
 papers: A-3
Printer
 cleaning: 5-3
 dimensions: A-5
 does not print: 6-3
 guidelines: 5-2
 maintaining: 5-1-25
 problem, identifying: 6-2
 servicing: 1-6
 settings: 4-8
 specifications: A-1-5
 tests: 2-7, 5-4-5
 transporting: 5-24-25
 unpacking: *See Quick Start Guide*
 weight: A-5
Printer driver: 6-3
 installing: 2-1
 Macintosh: 3-1-14
 Windows: 2-1-10
 Windows 3.1: 2-4
 Windows 95: 2-3
 See also Quick Start Guide
Printer Properties dialog box: 2-3
Printer setup
 Windows 3.1: 2-4
 Windows 95: 2-3



Printing
 a document: 2-2
 envelopes: 4-18-21
 method: A-1
 specifications: A-1-4
 speed, versus color: 2-12-14
 test pages: 5-4-5
Printing options
 specifying: 2-8
 Windows 3.1: 2-4

Q

Quick color printing: 2-9, 2-12

R

RAM: 2-14

Replacing
 BJ cartridge: 5-11-17
 ink tank: 5-18-21

Rollers, cleaning: 5-3

S

SB-21 BJ Cartridge Container: 1-2, 5-22-23

Screen matched color: 2-13

Serial interface, Apple: A-5

Serial number: 6-2

Servicing, the printer: 1-6

Setting tab: 2-7

Setup analyzer: 2-7, 2-10

Sheet feeder: 4-8-9, 4-14
 capacity: A-1

Specialty papers, Canon: 1-3, 4-2-4,
 4-22-26, A-2

Specifications: A-1-5

Storing
 BJ cartridge: 5-22-23
 environment: A-5

Super Solver: 1-4, 2-8, 6-1, 6-3

Supplies: 1-2-3

T

T-Shirt Transfers TR-101: 1-3, 4-3, 4-8, A-2

Technical notes: 6-5-7
 Compaq Presairo: 6-7
 Compaq Presairo 7170/7180: 6-6
 Toshiba laptop: 6-5

Test pages, printing: 5-4-5

Toshiba laptop: 6-5

Transparency CF-102: 1-3, 4-3, 4-8, A-2

Transporting, printer: 5-24-25

Troubleshooting: 6-1-7

U

US Commercial number 10
 envelopes: 4-18, A-1-2, A-4

V

Visual Guide: 1-4, 6-1
 tab: 2-8

W

Warranty: 1-6, 5-9, 6-2

Weight, printer: A-5

Windows: 2-1-14
 tabs: 2-5-11

Windows 3.1
 printing options: 2-4
 printer setup: 2-4

Windows 95
 printer setup: 2-3
 printer driver: 2-3

World Wide Web: 1-4, 6-1

FCC Regulations

This equipment has been tested and found to comply with the limits for a Class B digital device, pursuant to Part 15 of the FCC Rules. These limits are designed to provide reasonable protection against harmful interference in a residential installation. This equipment generates, uses and can radiate radio frequency energy and, if not installed and used in accordance with the instructions, may cause harmful interference to radio communications. However, there is no guarantee that interference will not occur in a particular installation. If this equipment does cause harmful interference to radio or television reception, which can be determined by turning the equipment off and on, the user is encouraged to try to correct the interference by one or more of the following measures:

- Reorient or relocate the receiving antenna.
- Increase the separation between the equipment and receiver.
- Connect the equipment into an outlet on a circuit different from that to which the receiver is connected.
- Consult the dealer or an experienced radio/TV technician for help.

Do not make any changes or modifications to the equipment unless otherwise specified in the manual. If such changes or modifications should be made, you could be required to stop operation of the equipment.

Use of shielded cable is required to comply with Class B limits in Subpart B of Part 15 of FCC Rules.

Canadian Radio Interference Regulations

This digital apparatus does not exceed the Class B limits for radio noise emissions from digital apparatus as set out in the interference-causing equipment standard entitled "Digital Apparatus," ICES-003 of the Industry and Science Canada.

Cet appareil numérique respecte les limites de bruits radioélectriques applicables aux appareils numériques de Classe B prescrites dans la

